

# 2023 TPI BASE

## HOLSTEIN

### RED HOLSTEIN

Sire Catalogue  
Proofs: August 2023



Casino, Photo: Christine Massfeller

Distribuidor en España:  
IMPORT EXPORT BAS SL



**GGI-SPERMEX**  
Genetics made in Germany

# Looking for German quality genetics published with US BREEDING VALUES?

## Your first source of top-class genetics for your herd

GGI-SPERMEX GmbH represents 12 leading German breeding and A.I. organizations at the international market for cattle genetics and is offering a unique product line from across Germany including experience, know-how and a wide range of genetics generated from the world's largest dairy breeding populations. This results into a unique portfolio including – besides the key breeds Holstein, Red Holstein, German Fleckvieh and Brown Swiss – more than 20 further dairy and beef cattle breeds, i.e. Angler, Jersey, several dual purpose and beef breeds.

In co-operation with our international partners, GGI-SPERMEX offers breeders worldwide access to the entire potential of German cattle breeding. The German breeding philosophy is clearly reflected in GGI-SPERMEX's product range. This includes high milk production with high components, very balanced conformation with excellent feet & legs and functional, healthy udders as well as high fertility and very good longevity. The aim is an efficient, healthy, trouble-free cow with high production over many lactations under a variety of housing and climatic conditions. With this catalogue GGI-SPERMEX proudly presents a selection of top Holstein and Red Holstein bulls published with US breeding values.

If you are looking for German Fleckvieh and Brown Swiss, a separate catalogue for each of these breeds is available through GGI-SPERMEX as well. Please contact GGI-SPERMEX directly or our international partners for local service.

✉ [info@ggi-spermex.de](mailto:info@ggi-spermex.de)  
 @ [www.ggi-spermex.de](http://www.ggi-spermex.de)

f /GGI.SPERMEX  
 Holstein /  
 Red Holstein

f /SPERMEX  
 Fleckvieh /  
 Brown Swiss

ig /GGISPERMEX

yt /GGI-SPERMEX



Anna Joosse

## GGI-SPERMEX

Genetics made in Germany

### INDEX

#### HOLSTEIN

GENOMIC		
Name	Beta Caseine	Page
<b>Madtime</b>	A2/A2	<b>3</b>
<b>Manchester</b>		<b>3</b>
<b>Neal</b>	A2/A2	<b>4</b>
<b>Manitu</b>		<b>4</b>
<b>Abaco</b>	A2/A2	<b>5</b>
<b>Dablino</b>	A2/A2	<b>5</b>
<b>Picobello</b>	A2/A2	<b>6</b>
<b>Comeback</b>		<b>6</b>
<b>Glenn</b>		<b>7</b>
<b>Zarek</b>	A2/A2	<b>7</b>
<b>GGA Pilot</b>		<b>8</b>
<b>Foxrock</b>	A2/A2	<b>8</b>
<b>Aljano</b>	A2/A2	<b>9</b>
<b>Krispy</b>	A2/A2	<b>9</b>
<b>Gladius</b>	A2/A2	<b>10</b>
<b>Graham</b>		<b>10</b>
<b>Magello</b>	A2/A2	<b>11</b>
<b>Foreman</b>		<b>11</b>
<b>Golf</b>	A2/A2	<b>12</b>
<b>Benedetto</b>	A2/A2	<b>12</b>
<b>Giroud</b>	A2/A2	<b>13</b>
<b>Pessoa</b>	A2/A2	<b>13</b>
<b> Tubus</b>		<b>14</b>
<b>Precision</b>	A2/A2	<b>14</b>
<b>Camus</b>	A2/A2	<b>15</b>
<b>Ripley</b>	A2/A2	<b>15</b>
<b>Riddick</b>		<b>16</b>

#### DAUGHTER PROVEN

Name	Beta Caseine	Page
<b>Garido</b>		<b>16</b>
<b>Rafting</b>		<b>17</b>
<b>Super Uno</b>		<b>17</b>
<b>Imano</b>		<b>18</b>
<b>Gigabyte</b>	A2/A2	<b>18</b>
<b>Casino</b>	A2/A2	<b>19</b>

#### RED HOLSTEIN

GENOMIC		
Name	Beta Caseine	Page
<b>Faramir Red</b>	A2/A2	<b>19</b>
<b>Spooky Red</b>		<b>20</b>
<b>Sirius Red P</b>		<b>20</b>
<b>Samsung Red P</b>	A2/A2	<b>21</b>

#### HOLSTEIN

GENOMIC-POLLED		
Name	Beta Caseine	Page
<b>Moro PP RDC</b>		<b>21</b>
<b>Baltic PP</b>	A2/A2	<b>22</b>
<b>Hadil PP</b>	A2/A2	<b>22</b>

#### RED HOLSTEIN

GENOMIC POLLED		
Name	Beta Caseine	Page
<b>Mo Red PP</b>		<b>23</b>
<b>Holmer Red PP</b>		<b>23</b>

# Madtime



823301  
624H009096  
HOLDEUM000542202582



Born: 2022-6-1 PEAK RUW MADTIME

Beta Caseine A2A2 | Kappa Caseine BB | aAa 513642 |

**TPI 3030**  
**NM\$ +1065**

Milk lbs +1959  
Fat +0.04 %  
Protein +0.03 %  
+87 lbs +71 lbs

Daughters: 0  
Herds: 0  
Reliability: 78 %

PL Productive life +6.4 73 % Rel.  
DPR Daughter pregnancy rate -0.5 73 % Rel.  
SCS Somatic cell score 2.76 74 % Rel.  
SCE Sire calving ease 1.6 % Diff. 61 % Rel.  
DCE Daughter calving ease 1.7 % Diff. 57 % Rel.  
SSB Sire stillbirth 5.7 % 57 % Rel.  
DSB Daughter stillbirth 4.8 % 55 % Rel.

♂ Mahomes (♂ Eldorado)

♀ Maudie (♂ Pursuit)

♀ Mandolin (♂ Medley)

♀ Octavia (2) VG 86 (♂ Octoberfest)



Madtime

Proofs: 08-2023

823301 Madtime		-1	0	+1	+2
PTAT	Type				+1.11
UDC	Udder Composite				+1.57
FLC	Feet & Legs Composite				+0.93
BSC	Body Composite				-0.89
Stature	Short				-0.92 Tall
Strength	Frail				-0.50 Strong
Body depth	Shallow				-0.69 Deep
Dairy form	Tight Ribbed				+0.61 Open Ribbed
Rump angle	High Pins				-0.32 Sloped
Thurl width	Narrow				+0.15 Wide
Rear leg (side view)	Posty				-0.28 Sickled
Rear leg (rear view)	Hock-in				+0.90 Straight
Foot angle	Low Angle				+0.50 Steep Angle
Feet & Legs Score	Low				+0.62 High
Fore udder attachment	Loose				+1.15 Strong
Rear udder height	Low				+1.94 High
Rear udder width	Narrow				+2.42 Wide
Udder cleft	Weak				+0.36 Strong
Udder depth	Deep				+0.14 Shallow
Front teat placement	Wide				+0.51 Close
Rear teat placement	Wide				+0.48 Close
Teat length	Short				-0.49 Long

# Manchester



691039  
624H009109  
HOLDEUM000542317418



Born: 2022-8-3 EILDON-TWEED RUW MAIL

Beta Caseine A1A2 | Kappa Caseine BB | aAa 243165 |

**TPI 2980**  
**NM\$ +1069**

Milk lbs +647  
Fat +0.22 %  
Protein +0.07 %  
+88 lbs +41 lbs

Daughters: 0  
Herds: 0  
Reliability: 79 %

PL Productive life +7.7 74 % Rel.  
DPR Daughter pregnancy rate +1.4 74 % Rel.  
SCS Somatic cell score 2.62 75 % Rel.  
SCE Sire calving ease 1.8 % Diff. 62 % Rel.  
DCE Daughter calving ease 1.5 % Diff. 59 % Rel.  
SSB Sire stillbirth 5.6 % 60 % Rel.  
DSB Daughter stillbirth 3.5 % 57 % Rel.

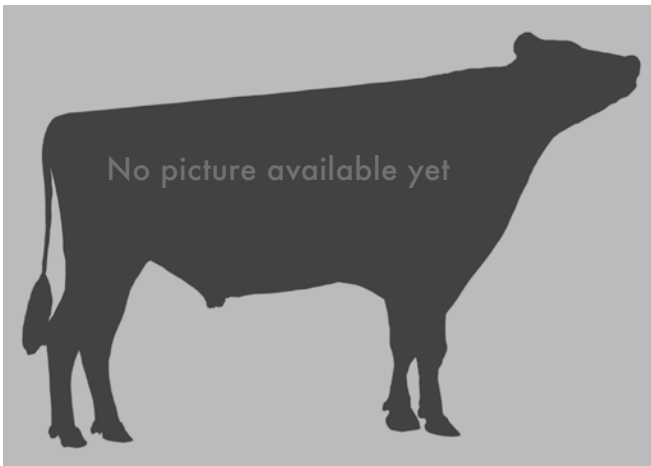
♂ Massey (♂ Legacy)

♀ Jersey (♂ Maximus)

♀ Ldon (2) VG 86 (♂ Marius)

1/1 11122 4,50 500 3,36 374

♀ Jersey 1 (1) GP 81 (♂ Modesty)



Proofs: 08-2023

691039 Manchester		-1	0	+1	+2
PTAT	Type				+0.64
UDC	Udder Composite				+1.77
FLC	Feet & Legs Composite				+0.35
BSC	Body Composite				-1.29
Stature	Short				-0.12 Tall
Strength	Frail				-1.32 Strong
Body depth	Shallow				-1.33 Deep
Dairy form	Tight Ribbed				+0.34 Open Ribbed
Rump angle	High Pins				-0.03 Sloped
Thurl width	Narrow				-0.29 Wide
Rear leg (side view)	Posty				-0.44 Sickled
Rear leg (rear view)	Hock-in				-0.25 Straight
Foot angle	Low Angle				+0.52 Steep Angle
Feet & Legs Score	Low				+0.45 High
Fore udder attachment	Loose				+1.85 Strong
Rear udder height	Low				+2.22 High
Rear udder width	Narrow				+1.61 Wide
Udder cleft	Weak				+0.61 Strong
Udder depth	Deep				+1.55 Shallow
Front teat placement	Wide				+0.77 Close
Rear teat placement	Wide				+0.78 Close
Teat length	Short				-0.67 Long

# Neal



811689  
624H009101  
HOLDEUM000542061616



Born: 2022-2-6 PEAK RUW NEPTUN

Beta Caseine A2A2 | Kappa Caseine BB | aAa 351426 |

**TPI 2965**  
**NM\$ +977**

**Milk lbs** +1484  
**Fat** +0.07 %  
**Protein** +0.04 %  
+78 lbs +59 lbs

**Daughters:** 0  
**Herds:** 0  
**Reliability:** 79 %

**PL** Productive life +7.1 74 % Rel.  
**DPR** Daughter pregnancy rate +1.0 74 % Rel.  
**SCS** Somatic cell score 2.48 75 % Rel.  
**SCE** Sire calving ease 1.9 % Diff. 60 % Rel.  
**DCE** Daughter calving ease 1.6 % Diff. 57 % Rel.  
**SSB** Sire stillbirth 5.9 % 56 % Rel.  
**DSB** Daughter stillbirth 4.6 % 55 % Rel.

♂ **Nexus** ( ♂ AltaCabot)

♀ Peak Maudie ( ♂ Pursuit)

♀ Pine-Tree Mandolin-ET ( ♂ Medley)

♀ Seagull-Bay My Octavia-ET (2) VG 86 ( ♂ Octoberfest)



Neal

Proofs: 08-2023

811689 Neal		-1	0	+1	+2
PTAT	Type				+0.88
UDC	Udder Composite				+1.19
FLC	Feet & Legs Composite				+0.15
BSC	Body Composite				+1.03
Stature	Short				+0.38 Tall
Strength	Frail				+0.87 Strong
Body depth	Shallow				+0.05 Deep
Dairy form	Tight Ribbed				-0.24 Open Ribbed
Rump angle	High Pins				+0.17 Sloped
Thurl width	Narrow				+1.19 Wide
Rear leg (side view)	Posty				+0.01 Sickled
Rear leg (rear view)	Hock-in				+0.44 Straight
Foot angle	Low Angle				+0.64 Steep Angle
Feet & Legs Score	Low				+0.12 High
Fore udder attachment	Loose				+1.38 Strong
Rear udder height	Low				+1.28 High
Rear udder width	Narrow				+1.85 Wide
Udder cleft	Weak				+0.50 Strong
Udder depth	Deep				+1.10 Shallow
Front teat placement	Wide				+0.08 Close
Rear teat placement	Wide				+0.16 Close
Teat length	Short				+0.61 Long

# Manitu



100033  
624H009097  
HOLNLDM000573428566



Born: 2021-6-21

Beta Caseine A1A2 | Kappa Caseine BB | aAa 234165 |

**TPI 2946**  
**NM\$ +845**

**Milk lbs** +1580  
**Fat** +0.06 %  
**Protein** +0.05 %  
+78 lbs +63 lbs

**Daughters:** 0  
**Herds:** 0  
**Reliability:** 80 %

**PL** Productive life +4.0 74 % Rel.  
**DPR** Daughter pregnancy rate -0.1 74 % Rel.  
**SCS** Somatic cell score 2.74 75 % Rel.  
**SCE** Sire calving ease 2.2 % Diff. 61 % Rel.  
**DCE** Daughter calving ease 2.1 % Diff. 57 % Rel.  
**SSB** Sire stillbirth 5.2 % 57 % Rel.  
**DSB** Daughter stillbirth 4.9 % 55 % Rel.

♂ **Manhattan** ( ♂ Positive)

♀ Poppe K&L Gorgina ( ♂ Durable)

1/1 12112 4,13 500 3,54 429

♀ KHE I'm Good (1) VG 87 ( ♂ Gymnast)

3/2 16420 3,91 642 3,33 547

♀ KHE Isolde (3) VG 87 ( ♂ Rubicon)



Manitu

Proofs: 08-2023

100033 Manitu		-1	0	+1	+2
PTAT	Type				+1.87
UDC	Udder Composite				+2.09
FLC	Feet & Legs Composite				+0.77
BSC	Body Composite				-0.23
Stature	Short				+1.43 Tall
Strength	Frail				+0.06 Strong
Body depth	Shallow				+0.37 Deep
Dairy form	Tight Ribbed				+1.76 Open Ribbed
Rump angle	High Pins				+1.46 Sloped
Thurl width	Narrow				+1.17 Wide
Rear leg (side view)	Posty				-0.05 Sickled
Rear leg (rear view)	Hock-in				+0.55 Straight
Foot angle	Low Angle				+1.00 Steep Angle
Feet & Legs Score	Low				+1.14 High
Fore udder attachment	Loose				+2.55 Strong
Rear udder height	Low				+2.51 High
Rear udder width	Narrow				+2.70 Wide
Udder cleft	Weak				+0.88 Strong
Udder depth	Deep				+2.24 Shallow
Front teat placement	Wide				+1.05 Close
Rear teat placement	Wide				+1.11 Close
Teat length	Short				-0.37 Long

# Abaco



574388  
624H009111  
HOLDEUM000124905721



Born: 2022-9-9

Beta Caseine A2A2 | Kappa Caseine AA | aAa --- | |

**TPI 2943**  
**NM\$ +984**

Milk lbs +1942  
Fat +0.03 %  
Protein +0.01 %  
+84 lbs +63 lbs

Daughters: 0  
Herds: 0  
Reliability: 79 %

PL Productive life +4.6 74 % Rel.  
DPR Daughter pregnancy rate -2.4 73 % Rel.  
SCS Somatic cell score 2.73 75 % Rel.  
SCE Sire calving ease 2.2 % Diff. 60 % Rel.  
DCE Daughter calving ease 1.9 % Diff. 55 % Rel.  
SSB Sire stillbirth 6.1 % 55 % Rel.  
DSB Daughter stillbirth 3.8 % 54 % Rel.

♂ Aerosmith ( ♂ Aristocrat)

♀ Yabby (1) VG 85 ( ♂ Pursuit)  
1/1 13393 3,24 434 3,08 412

♀ Swch Yodel (3) VG 85 ( ♂ DG Charley)  
2/2 13694 3,66 501 3,18 435

♀ Yoda (2) GP 82 ( ♂ Delta 1427)



Abaco

Proofs: 08-2023

574388 Abaco		-1	0	+1	+2
PTAT	Type				+1.83
UDC	Udder Composite				+1.81
FLC	Feet & Legs Composite				+0.56
BSC	Body Composite				+0.09
Stature	Short				+1.43 Tall
Strength	Frail				+0.46 Strong
Body depth	Shallow				+0.65 Deep
Dairy form	Tight Ribbed				+1.76 Open Ribbed
Rump angle	High Pins				+0.40 Sloped
Thurl width	Narrow				+1.18 Wide
Rear leg (side view)	Posty				+0.96 Sickled
Rear leg (rear view)	Hock-in				+0.41 Straight
Foot angle	Low Angle				+0.93 Steep Angle
Feet & Legs Score	Low				+0.96 High
Fore udder attachment	Loose				+2.31 Strong
Rear udder height	Low				+2.16 High
Rear udder width	Narrow				+2.30 Wide
Udder cleft	Weak				+1.27 Strong
Udder depth	Deep				+1.86 Shallow
Front teat placement	Wide				+1.90 Close
Rear teat placement	Wide				+1.85 Close
Teat length	Short				-0.93 Long

# Dablino



574385  
624H009110  
HOLDEUM000124815989



Born: 2022-5-7

Beta Caseine A2A2 | Kappa Caseine BB | aAa --- | |

**TPI 2943**  
**NM\$ +975**

Milk lbs +1294  
Fat +0.16 %  
Protein +0.09 %  
+98 lbs +66 lbs

Daughters: 0  
Herds: 0  
Reliability: 79 %

PL Productive life +4.9 74 % Rel.  
DPR Daughter pregnancy rate -0.7 74 % Rel.  
SCS Somatic cell score 2.84 75 % Rel.  
SCE Sire calving ease 1.6 % Diff. 60 % Rel.  
DCE Daughter calving ease 1.8 % Diff. 57 % Rel.  
SSB Sire stillbirth 5.7 % 55 % Rel.  
DSB Daughter stillbirth 4.8 % 55 % Rel.

♂ Dublin ( ♂ Durable)

♀ E Lusty (0) VG 85 ( ♂ Einstein)

♀ Luster ( ♂ Tahiti)

♀ Lauri (1) VG 85 ( ♂ Jedi)



Dablino

Proofs: 08-2023

574385 Dablino		-1	0	+1	+2
PTAT	Type				+1.34
UDC	Udder Composite				+0.92
FLC	Feet & Legs Composite				+0.33
BSC	Body Composite				-0.07
Stature	Short				+0.60 Tall
Strength	Frail				+0.18 Strong
Body depth	Shallow				+0.32 Deep
Dairy form	Tight Ribbed				+1.19 Open Ribbed
Rump angle	High Pins				-0.29 Sloped
Thurl width	Narrow				+1.13 Wide
Rear leg (side view)	Posty				-0.11 Sickled
Rear leg (rear view)	Hock-in				+0.47 Straight
Foot angle	Low Angle				+0.15 Steep Angle
Feet & Legs Score	Low				+0.44 High
Fore udder attachment	Loose				+1.04 Strong
Rear udder height	Low				+1.09 High
Rear udder width	Narrow				+1.65 Wide
Udder cleft	Weak				+0.58 Strong
Udder depth	Deep				+0.63 Shallow
Front teat placement	Wide				+0.15 Close
Rear teat placement	Wide				+0.40 Close
Teat length	Short				+0.27 Long

# Picobello



689780  
624HO09098  
HOLDEUM000541648398



Born: 2021-12-17 PROGENESIS RUW POLAR

Beta Caseine A2A2 | Kappa Caseine AB | aAa 243165 | | H5C

**TPI 2941**  
**NM\$ +966**

**Milk lbs** +1323  
**Fat** +0.10 %  
**Protein** +0.04 %  
**+79 lbs** **+53 lbs**

**Daughters:** 0  
**Herds:** 0  
**Reliability:** 80 %

**PL Productive life** +6.4 75 % Rel.  
**DPR Daughter pregnancy rate** +1.1 74 % Rel.  
**SCS Somatic cell score** 2.69 76 % Rel.  
**SCE Sire calving ease** 2.2 % Diff. 62 % Rel.  
**DCE Daughter calving ease** 2.6 % Diff. 57 % Rel.  
**SSB Sire stillbirth** 6.2 % 60 % Rel.  
**DSB Daughter stillbirth** 4.8 % 55 % Rel.

♂ **Pinball** (♂ Challenger)

♀ Progenesis Skywalker Kirk (2) GP 83 (♂ **Skywalker**)

2/2 13351 3,86 516 3,60 481

♀ Progenesis Fortune Kili (1) VG 85 (♂ **Fortune**)

2/2 14105 4,12 581 3,42 483

♀ Progenesis Abbott Kilo (♂ **Abbott**)



Picobello

Proofs: 08-2023

689780 Picobello		-1	0	+1	+2
PTAT	Type				+1.31
UDC	Udder Composite				+1.84
FLC	Feet & Legs Composite				+0.10
BSC	Body Composite				+0.05
Stature	Short				+0.48 Tall
Strength	Frail				+0.11 Strong
Body depth	Shallow				-0.30 Deep
Dairy form	Tight Ribbed				+0.47 Open Ribbed
Rump angle	High Pins				-0.40 Sloped
Thurl width	Narrow				+0.63 Wide
Rear leg (side view)	Posty				-0.37 Sickled
Rear leg (rear view)	Hock-in				-0.17 Straight
Foot angle	Low Angle				+0.52 Steep Angle
Feet & Legs Score	Low				+0.28 High
Fore udder attachment	Loose				+2.14 Strong
Rear udder height	Low				+2.77 High
Rear udder width	Narrow				+1.82 Wide
Udder cleft	Weak				+0.23 Strong
Udder depth	Deep				+1.73 Shallow
Front teat placement	Wide				-0.11 Close
Rear teat placement	Wide				-0.07 Close
Teat length	Short				+0.06 Long

# Comeback



619239  
624HO09115  
HOLDEUM001604442382



Born: 2021-7-12 COMEBACK

Beta Caseine A1A2 | Kappa Caseine BE | aAa 231465 | |

**TPI 2939**  
**NM\$ +914**

**Milk lbs** +786  
**Fat** +0.21 %  
**Protein** +0.09 %  
**+91 lbs** **+50 lbs**

**Daughters:** 0  
**Herds:** 0  
**Reliability:** 80 %

**PL Productive life** +5.0 75 % Rel.  
**DPR Daughter pregnancy rate** -0.6 75 % Rel.  
**SCS Somatic cell score** 2.72 77 % Rel.  
**SCE Sire calving ease** 1.9 % Diff. 61 % Rel.  
**DCE Daughter calving ease** 1.1 % Diff. 57 % Rel.  
**SSB Sire stillbirth** 5.9 % 56 % Rel.  
**DSB Daughter stillbirth** 3.9 % 56 % Rel.

♂ **Commitment** (♂ Complete)

♀ WinStar Entity 6062 (♂ **Entity**)

♀ WinStar Spectre 4618 (1) GP 83 (♂ **Spectre**)

1/1 10970 5,27 578 3,83 420

♀ End-Road Profit 2203 (3) EX 90 (♂ **Profit**)



Comeback

Proofs: 08-2023

619239 Comeback		-1	0	+1	+2
PTAT	Type				+1.54
UDC	Udder Composite				+1.58
FLC	Feet & Legs Composite				+1.29
BSC	Body Composite				+0.07
Stature	Short				+0.73 Tall
Strength	Frail				+0.22 Strong
Body depth	Shallow				+0.10 Deep
Dairy form	Tight Ribbed				+0.73 Open Ribbed
Rump angle	High Pins				+1.37 Sloped
Thurl width	Narrow				+0.47 Wide
Rear leg (side view)	Posty				-0.82 Sickled
Rear leg (rear view)	Hock-in				+1.60 Straight
Foot angle	Low Angle				+1.01 Steep Angle
Feet & Legs Score	Low				+1.32 High
Fore udder attachment	Loose				+1.87 Strong
Rear udder height	Low				+2.19 High
Rear udder width	Narrow				+1.88 Wide
Udder cleft	Weak				+0.54 Strong
Udder depth	Deep				+1.42 Shallow
Front teat placement	Wide				+0.12 Close
Rear teat placement	Wide				+0.36 Close
Teat length	Short				-0.02 Long

# Glenn



823284  
624HO09081  
HOLDEUM000541365201



Born: 2021-6-20 WILDER 365201

Beta Caseine A1A2 | Kappa Caseine BB | aAa 315246 |

**TPI 2934**  
**NM\$ +940**

Milk lbs +1464  
Fat +0.11 %  
Protein +0.03 %  
+89 lbs +55 lbs

Daughters: 0  
Herds: 0  
Reliability: 78 %

PL Productive life +4.5 73 % Rel.  
DPR Daughter pregnancy rate -1.0 73 % Rel.  
SCS Somatic cell score 2.61 74 % Rel.  
SCE Sire calving ease 2.3 % Diff. 61 % Rel.  
DCE Daughter calving ease 2.2 % Diff. 54 % Rel.  
SSB Sire stillbirth 6.2 % 55 % Rel.  
DSB Daughter stillbirth 4.6 % 53 % Rel.

♂ **Gladius** (♂ Gazebo)

♀ HET SC Charlene ET (1) VG 87 (♂ **Soundcloud**)

1/1 12603 4,14 522 3,44 434

♀ HET SOU Chenile (1) VG 86 (♂ **Sound System**)

2/2 10682 4,08 436 3,63 388

♀ Diepenhoek Chanel (3) VG 87 (♂ **Balisto**)



Glenn

Proofs: 08-2023

823284 Glenn		-1	0	+1	+2
PTAT	Type				+1.68
UDC	Udder Composite				+2.02
FLC	Feet & Legs Composite				+0.31
BSC	Body Composite				-0.37
Stature	Short				+1.68 Tall
Strength	Frail				-0.19 Strong
Body depth	Shallow				+0.06 Deep
Dairy form	Tight Ribbed				+1.57 Open Ribbed
Rump angle	High Pins				+0.19 Sloped
Thurl width	Narrow				+0.66 Wide
Rear leg (side view)	Posty				-0.05 Sickled
Rear leg (rear view)	Hock-in				+0.57 Straight
Foot angle	Low Angle				+0.43 Steep Angle
Feet & Legs Score	Low				+0.68 High
Fore udder attachment	Loose				+2.22 Strong
Rear udder height	Low				+2.84 High
Rear udder width	Narrow				+2.13 Wide
Udder cleft	Weak				+1.04 Strong
Udder depth	Deep				+2.75 Shallow
Front teat placement	Wide				+0.64 Close
Rear teat placement	Wide				+0.63 Close
Teat length	Short				-0.49 Long

# Zarek



500945  
624HO09074  
HOL840M003220448453



Born: 2020-8-14 MATCREST ZAREK 945-ET

Beta Caseine A2A2 | Kappa Caseine AB | aAa 342516 |

**TPI 2924**  
**NM\$ +933**

Milk lbs +1288  
Fat +0.16 %  
Protein +0.05 %  
+95 lbs +56 lbs

Daughters: 0  
Herds: 0  
Reliability: 81 %

PL Productive life +4.6 77 % Rel.  
DPR Daughter pregnancy rate -0.6 77 % Rel.  
SCS Somatic cell score 2.90 78 % Rel.  
SCE Sire calving ease 1.6 % Diff. 63 % Rel.  
DCE Daughter calving ease 1.4 % Diff. 61 % Rel.  
SSB Sire stillbirth 5.0 % 60 % Rel.  
DSB Daughter stillbirth 5.2 % 60 % Rel.

♂ **AltaZarek** (♂ Topshot)

♀ Double-Eagle Medley Daisy (♂ **Medley**)

♀ Double-Eagle Duke Connie (0)GP 84 (♂ **Duke**)

♀ Cookiecutter Haze (1) EX 90 (♂ **Shamrock**)



Zarek

Proofs: 08-2023

500945 Zarek		-1	0	+1	+2
PTAT	Type				+1.16
UDC	Udder Composite				+1.62
FLC	Feet & Legs Composite				+0.75
BSC	Body Composite				-0.19
Stature	Short				+0.52 Tall
Strength	Frail				+0.04 Strong
Body depth	Shallow				-0.13 Deep
Dairy form	Tight Ribbed				+0.68 Open Ribbed
Rump angle	High Pins				-0.06 Sloped
Thurl width	Narrow				-0.02 Wide
Rear leg (side view)	Posty				+0.59 Sickled
Rear leg (rear view)	Hock-in				+0.49 Straight
Foot angle	Low Angle				+0.61 Steep Angle
Feet & Legs Score	Low				+0.92 High
Fore udder attachment	Loose				+2.25 Strong
Rear udder height	Low				+1.99 High
Rear udder width	Narrow				+2.19 Wide
Udder cleft	Weak				-0.34 Strong
Udder depth	Deep				+1.41 Shallow
Front teat placement	Wide				+0.37 Close
Rear teat placement	Wide				-0.01 Close
Teat length	Short				-0.03 Long

# GGA Pilot



101103  
624HO09103  
HOLDEUM000364282656



Born: 2022-6-21 GIESMANN GENETICS AMMERLAND PILOT

Beta Caseine A1A2 | Kappa Caseine AB | aAa --- | |

**TPI 2921**  
**NM\$ +921**

Milk lbs +1690  
Fat -0.02 %  
Protein +0.04 %  
+59 lbs +65 lbs

Daughters: 0  
Herds: 0  
Reliability: 78 %

PL Productive life +6.0 74 % Rel.  
DPR Daughter pregnancy rate +1.9 73 % Rel.  
SCS Somatic cell score 2.86 74 % Rel.  
SCE Sire calving ease 1.8 % Diff. 59 % Rel.  
DCE Daughter calving ease 2.0 % Diff. 55 % Rel.  
SSB Sire stillbirth 5.8 % 53 % Rel.  
DSB Daughter stillbirth 4.9 % 54 % Rel.

♂ Patch (♂ Timberlake)

♀ Jane (♂ Best Benz)

♀ Juana (1) VG 85 (♂ Gymnast)

1/1 12831 3,92 503 3,65 468

♀ Jolene (4) VG 87 (♂ Balisto)



GGA Pilot

Proofs: 08-2023

101103 GGA Pilot		-1	0	+1	+2
PTAT	Type				+1.13
UDC	Udder Composite				+1.43
FLC	Feet & Legs Composite				+1.01
BSC	Body Composite				+0.40
Stature	Short				+0.55 Tall
Strength	Frail				+0.51 Strong
Body depth	Shallow				+0.04 Deep
Dairy form	Tight Ribbed				+0.39 Open Ribbed
Rump angle	High Pins				-0.18 Sloped
Thurl width	Narrow				+0.51 Wide
Rear leg (side view)	Posty				-0.73 Sickled
Rear leg (rear view)	Hock-in				+1.21 Straight
Foot angle	Low Angle				+1.21 Steep Angle
Feet & Legs Score	Low				+1.01 High
Fore udder attachment	Loose				+1.57 Strong
Rear udder height	Low				+2.01 High
Rear udder width	Narrow				+2.27 Wide
Udder cleft	Weak				+0.16 Strong
Udder depth	Deep				+0.88 Shallow
Front teat placement	Wide				+0.27 Close
Rear teat placement	Wide				+0.00 Close
Teat length	Short				+0.02 Long

# Foxrock



619251  
624HO09095  
HOLNLDM000947702601



Born: 2022-4-3 GARY

Beta Caseine A2A2 | Kappa Caseine AA | aAa --- | |

**TPI 2912**  
**NM\$ +828**

Milk lbs +625  
Fat +0.21 %  
Protein +0.10 %  
+84 lbs +49 lbs

Daughters: 0  
Herds: 0  
Reliability: 78 %

PL Productive life +4.5 74 % Rel.  
DPR Daughter pregnancy rate +0.1 73 % Rel.  
SCS Somatic cell score 2.72 74 % Rel.  
SCE Sire calving ease 2.3 % Diff. 61 % Rel.  
DCE Daughter calving ease 2.0 % Diff. 55 % Rel.  
SSB Sire stillbirth 6.2 % 55 % Rel.  
DSB Daughter stillbirth 5.4 % 54 % Rel.

♂ Foreman (♂ Freemax)

♀ Gaby (1)G 79 (♂ Gigabyte)

♀ Gonda (1) VG 86 (♂ Agronaut)

3/2 7618 4,41 336 3,53 269

♀ Goldstern (1) GP 84 (♂ Cinema)



Foxrock

Proofs: 08-2023

619251 Foxrock		-1	0	+1	+2
PTAT	Type				+1.87
UDC	Udder Composite				+1.90
FLC	Feet & Legs Composite				+1.22
BSC	Body Composite				+0.85
Stature	Short				+0.92 Tall
Strength	Frail				+0.83 Strong
Body depth	Shallow				+0.36 Deep
Dairy form	Tight Ribbed				+0.50 Open Ribbed
Rump angle	High Pins				-0.26 Sloped
Thurl width	Narrow				+1.43 Wide
Rear leg (side view)	Posty				-0.50 Sickled
Rear leg (rear view)	Hock-in				+1.88 Straight
Foot angle	Low Angle				+1.53 Steep Angle
Feet & Legs Score	Low				+1.16 High
Fore udder attachment	Loose				+2.28 Strong
Rear udder height	Low				+2.75 High
Rear udder width	Narrow				+2.57 Wide
Udder cleft	Weak				+0.33 Strong
Udder depth	Deep				+1.57 Shallow
Front teat placement	Wide				+0.48 Close
Rear teat placement	Wide				+0.17 Close
Teat length	Short				+0.52 Long



# Aljano



823288  
624H009104  
HOLDEUM001406595012



Born: 2021-8-9 SHA ALJANO

Beta Caseine A2A2 | Kappa Caseine AB | aAa 243165 | | H5C

**TPI 2900**  
**NM\$ +925**

Milk lbs +1070  
Fat +0.16 %  
Protein +0.09 %  
+88 lbs +59 lbs

Daughters: 0  
Herds: 0  
Reliability: 80 %

PL Productive life +5.3 75 % Rel.  
DPR Daughter pregnancy rate +0.0 74 % Rel.  
SCS Somatic cell score 2.96 76 % Rel.  
SCE Sire calving ease 2.1 % Diff. 61 % Rel.  
DCE Daughter calving ease 1.7 % Diff. 58 % Rel.  
SSB Sire stillbirth 6.6 % 57 % Rel.  
DSB Daughter stillbirth 4.5 % 55 % Rel.

♂ Arrozo (♂ Renegade)

♀ SHA Burundi (1) GP 83 (♂ Riveting)  
200 T. 6661 3,83 255 3,68 245

♀ SHA Busanga (1) VG 85 (♂ Bubba)  
2/1 11006 3,95 435 3,61 397

♀ SHA Gorongosa (2) VG 87 (♂ Rubicon)



Aljano

Proofs: 08-2023

823288 Aljano		-1	0	+1	+2
PTAT	Type				+1.09
UDC	Udder Composite				+1.16
FLC	Feet & Legs Composite				+0.80
BSC	Body Composite				+0.04
Stature	Short				+0.25 Tall
Strength	Frail				+0.28 Strong
Body depth	Shallow				+0.19 Deep
Dairy form	Tight Ribbed				+0.61 Open Ribbed
Rump angle	High Pins				+0.82 Sloped
Thurl width	Narrow				+0.31 Wide
Rear leg (side view)	Posty				+0.20 Sickled
Rear leg (rear view)	Hock-in				+0.97 Straight
Foot angle	Low Angle				+0.45 Steep Angle
Feet & Legs Score	Low				+0.77 High
Fore udder attachment	Loose				+1.24 Strong
Rear udder height	Low				+1.71 High
Rear udder width	Narrow				+1.78 Wide
Udder cleft	Weak				+0.29 Strong
Udder depth	Deep				+0.43 Shallow
Front teat placement	Wide				+0.35 Close
Rear teat placement	Wide				+0.38 Close
Teat length	Short				+0.36 Long

# Krispy



823290  
624H009102  
HOLNLDM000889323731



Born: 2021-11-15 KRISPY

Beta Caseine A2A2 | Kappa Caseine AB | aAa 435261 | |

**TPI 2900**  
**NM\$ +930**

Milk lbs +1022  
Fat +0.15 %  
Protein +0.09 %  
+84 lbs +59 lbs

Daughters: 0  
Herds: 0  
Reliability: 80 %

PL Productive life +5.3 75 % Rel.  
DPR Daughter pregnancy rate +1.1 74 % Rel.  
SCS Somatic cell score 2.87 76 % Rel.  
SCE Sire calving ease 1.9 % Diff. 63 % Rel.  
DCE Daughter calving ease 2.6 % Diff. 58 % Rel.  
SSB Sire stillbirth 5.5 % 60 % Rel.  
DSB Daughter stillbirth 4.8 % 55 % Rel.

♂ Pinball (♂ Challenger)

♀ Progenesis Skywalker Kirk (2) GP 83 (♂ Skywalker)  
2/2 13351 3,86 516 3,60 481

♀ Progenesis Fortune Kili (1) VG 85 (♂ Fortune)  
2/2 14105 4,12 581 3,42 483

♀ Progenesis Abbott Kilo (♂ Abbott)



Krispy

Proofs: 08-2023

823290 Krispy		-1	0	+1	+2
PTAT	Type				+1.15
UDC	Udder Composite				+1.32
FLC	Feet & Legs Composite				-0.15
BSC	Body Composite				+0.11
Stature	Short				+0.87 Tall
Strength	Frail				+0.28 Strong
Body depth	Shallow				+0.02 Deep
Dairy form	Tight Ribbed				+0.86 Open Ribbed
Rump angle	High Pins				+0.11 Sloped
Thurl width	Narrow				+0.65 Wide
Rear leg (side view)	Posty				-0.27 Sickled
Rear leg (rear view)	Hock-in				-0.25 Straight
Foot angle	Low Angle				+0.23 Steep Angle
Feet & Legs Score	Low				+0.12 High
Fore udder attachment	Loose				+1.77 Strong
Rear udder height	Low				+2.28 High
Rear udder width	Narrow				+1.57 Wide
Udder cleft	Weak				+0.06 Strong
Udder depth	Deep				+1.16 Shallow
Front teat placement	Wide				+0.01 Close
Rear teat placement	Wide				+0.04 Close
Teat length	Short				-0.55 Long

# Gladius



823250  
624H009077  
HOLDEUM000123451708



GGI-SPERMEX  
Genetics made in Germany

Born: 2019-7-15 KAX GLADIUS

Beta Caseine A2A2 | Kappa Caseine AB | aAa 234156 | |

**TPI 2883**  
**NM\$ +968**

Milk lbs +2054  
Fat +0.03 %  
Protein +0.03 %  
+87 lbs +72 lbs

Daughters: 0  
Herds: 0  
Reliability: 81 %

PL	Productive life	+4.6	76 % Rel.
DPR	Daughter pregnancy rate	-1.6	75 % Rel.
SCS	Somatic cell score	2.80	76 % Rel.
SCE	Sire calving ease	2.7 % Diff.	84 % Rel.
DCE	Daughter calving ease	2.5 % Diff.	58 % Rel.
SSB	Sire stillbirth	6.2 %	72 % Rel.
DSB	Daughter stillbirth	5.2 %	57 % Rel.

♂ **Gazebo** (♂ Gage)

♀ KAX Dollyanna (2) VG 86 (♂ **Superhero**)

2/2 12781 4,11 525 3,53 451

♀ KAX Dolle (3) VG 87 (♂ **Missouri**)

4/4 14610 3,54 517 3,30 482

♀ KAX Dollargirl (3) VG 86 (♂ **Suran**)



Gladius EX 90

Proofs: 08-2023

823250 Gladius EX 90		-1	0	+1	+2
PTAT	Type				+0.95
UDC	Udder Composite				+1.22
FLC	Feet & Legs Composite				+0.37
BSC	Body Composite				-0.64
Stature	Short				+0.57 Tall
Strength	Frail				-0.37 Strong
Body depth	Shallow				-0.29 Deep
Dairy form	Tight Ribbed				+0.96 Open Ribbed
Rump angle	High Pins				+0.47 Sloped
Thurl width	Narrow				-0.20 Wide
Rear leg (side view)	Posty				-1.73 Sickled
Rear leg (rear view)	Hock-in				+0.49 Straight
Foot angle	Low Angle				+0.74 Steep Angle
Feet & Legs Score	Low				+0.52 High
Fore udder attachment	Loose				+1.19 Strong
Rear udder height	Low				+1.74 High
Rear udder width	Narrow				+1.57 Wide
Udder cleft	Weak				+0.59 Strong
Udder depth	Deep				+0.91 Shallow
Front teat placement	Wide				+0.62 Close
Rear teat placement	Wide				+0.95 Close
Teat length	Short				-0.48 Long

# Graham



769555  
624H009086  
HOLDEUM001505201168



GGI-SPERMEX  
Genetics made in Germany

Born: 2021-6-18 KHE GRAHAM

Beta Caseine A1A2 | Kappa Caseine AB | aAa --- | |

**TPI 2869**  
**NM\$ +874**

Milk lbs +1634  
Fat +0.03 %  
Protein +0.02 %  
+73 lbs +57 lbs

Daughters: 0  
Herds: 0  
Reliability: 79 %

PL	Productive life	+5.3	73 % Rel.
DPR	Daughter pregnancy rate	+0.1	73 % Rel.
SCS	Somatic cell score	2.68	74 % Rel.
SCE	Sire calving ease	1.8 % Diff.	60 % Rel.
DCE	Daughter calving ease	2.3 % Diff.	54 % Rel.
SSB	Sire stillbirth	5.8 %	54 % Rel.
DSB	Daughter stillbirth	5.2 %	53 % Rel.

♂ **Gladius** (♂ Gazebo)

♀ Ibrahimia (2) VG 87 (♂ **Gywer RDC**)

2/1 10208 3,78 386 3,35 342

♀ Ibiziana (4) VG 89 (♂ **Salvatore**)

4/3 12017 3,33 400 3,24 389

♀ Ibiza (1) GP 83 (♂ **Penley**)



Graham

Proofs: 08-2023

769555 Graham		-1	0	+1	+2
PTAT	Type				+1.37
UDC	Udder Composite				+1.64
FLC	Feet & Legs Composite				+0.27
BSC	Body Composite				+0.39
Stature	Short				+1.28 Tall
Strength	Frail				+0.54 Strong
Body depth	Shallow				+0.43 Deep
Dairy form	Tight Ribbed				+0.83 Open Ribbed
Rump angle	High Pins				-0.11 Sloped
Thurl width	Narrow				+0.36 Wide
Rear leg (side view)	Posty				-1.37 Sickled
Rear leg (rear view)	Hock-in				+0.64 Straight
Foot angle	Low Angle				+0.96 Steep Angle
Feet & Legs Score	Low				+0.51 High
Fore udder attachment	Loose				+1.76 Strong
Rear udder height	Low				+2.33 High
Rear udder width	Narrow				+2.34 Wide
Udder cleft	Weak				+0.68 Strong
Udder depth	Deep				+1.41 Shallow
Front teat placement	Wide				+1.09 Close
Rear teat placement	Wide				+0.51 Close
Teat length	Short				-0.01 Long

# Magello



690955  
624H009094  
HOLNLDM000597161748



Born: 2022-4-25

Beta Caseine A2A2 | Kappa Caseine AB | aAa 243651 |

**TPI 2866**  
**NM\$ +890**

Milk lbs +1997  
Fat -0.05 %  
Protein +00 %  
+61 lbs +63 lbs

Daughters: 0  
Herds: 0  
Reliability: 78 %

PL Productive life +6.0 74 % Rel.  
DPR Daughter pregnancy rate +0.1 73 % Rel.  
SCS Somatic cell score 2.62 74 % Rel.  
SCE Sire calving ease 1.9 % Diff. 60 % Rel.  
DCE Daughter calving ease 1.8 % Diff. 53 % Rel.  
SSB Sire stillbirth 5.6 % 55 % Rel.  
DSB Daughter stillbirth 4.7 % 51 % Rel.

♂ Migel (♂ Milktime)

♀ SPH Alberta (♂ Bali)

♀ Alida (2) VG 86 (♂ Gymnast)

3/2 11436 4,21 481 3,87 443

♀ Heidenskipster Amalia (1) VG 86 (♂ Supershot)



Magello

Proofs: 08-2023

690955 Magello		-1	0	+1	+2
PTAT	Type				+1.04
UDC	Udder Composite				+1.29
FLC	Feet & Legs Composite				+1.07
BSC	Body Composite				-0.63
Stature	Short				+0.03 Tall
Strength	Frail				-0.28 Strong
Body depth	Shallow				-0.29 Deep
Dairy form	Tight Ribbed				+0.96 Open Ribbed
Rump angle	High Pins				+0.84 Sloped
Thurl width	Narrow				+0.24 Wide
Rear leg (side view)	Posty				-0.35 Sickled
Rear leg (rear view)	Hock-in				+1.15 Straight
Foot angle	Low Angle				+0.40 Steep Angle
Feet & Legs Score	Low				+1.00 High
Fore udder attachment	Loose				+1.12 Strong
Rear udder height	Low				+1.84 High
Rear udder width	Narrow				+2.15 Wide
Udder cleft	Weak				+0.76 Strong
Udder depth	Deep				+0.19 Shallow
Front teat placement	Wide				+0.14 Close
Rear teat placement	Wide				+0.43 Close
Teat length	Short				+0.36 Long

# Foreman



823268  
624H009089  
HOLDEUM001406051280



Born: 2020-4-17

SHA FOREMAN

Beta Caseine A1A2 | Kappa Caseine AA | aAa 432516 |

**TPI 2839**  
**NM\$ +877**

Milk lbs +1278  
Fat +0.12 %  
Protein +0.07 %  
+85 lbs +60 lbs

Daughters: 0  
Herds: 0  
Reliability: 81 %

PL Productive life +4.2 76 % Rel.  
DPR Daughter pregnancy rate -1.0 76 % Rel.  
SCS Somatic cell score 3.08 77 % Rel.  
SCE Sire calving ease 1.6 % Diff. 85 % Rel.  
DCE Daughter calving ease 1.6 % Diff. 59 % Rel.  
SSB Sire stillbirth 5.2 % 73 % Rel.  
DSB Daughter stillbirth 4.7 % 58 % Rel.

♂ Freemax (♂ Imax)

♀ SHA Grumeti (2) VG 87 (♂ Rubicon)

2/2 12473 4,04 504 3,46 432

♀ SHA Gerenuk (4) EX 91 (♂ Balisto)

6/5 12098 4,22 511 3,60 435

♀ WEH Georgina (3) VG 87 (♂ Numero Uno)



Foreman

Proofs: 08-2023

823268 Foreman		-1	0	+1	+2
PTAT	Type				+1.28
UDC	Udder Composite				+1.28
FLC	Feet & Legs Composite				+0.83
BSC	Body Composite				-0.28
Stature	Short				-0.40 Tall
Strength	Frail				-0.06 Strong
Body depth	Shallow				-0.20 Deep
Dairy form	Tight Ribbed				+0.67 Open Ribbed
Rump angle	High Pins				-0.57 Sloped
Thurl width	Narrow				+1.09 Wide
Rear leg (side view)	Posty				+0.70 Sickled
Rear leg (rear view)	Hock-in				+1.13 Straight
Foot angle	Low Angle				+0.34 Steep Angle
Feet & Legs Score	Low				+0.60 High
Fore udder attachment	Loose				+1.53 Strong
Rear udder height	Low				+1.93 High
Rear udder width	Narrow				+2.15 Wide
Udder cleft	Weak				-0.68 Strong
Udder depth	Deep				+0.48 Shallow
Front teat placement	Wide				-0.52 Close
Rear teat placement	Wide				-1.17 Close
Teat length	Short				+0.61 Long

# Golf



159002  
624HO09079  
HOLNLDM000690845680



GGI-SPERMEX  
Genetics made in Germany

Born: 2019-12-14 GOLF

Beta Caseine A2A2 | Kappa Caseine AB | aAa 342561 |

**TPI 2828**  
**NM\$ +724**

**Milk lbs** +787  
**Fat** +0.15 %  
**Protein** +0.09 %  
**+73 lbs** **+50 lbs**

**Daughters:** 0  
**Herds:** 0  
**Reliability:** 81 %

**PL** Productive life +2.9 76 % Rel.  
**DPR** Daughter pregnancy rate -0.2 76 % Rel.  
**SCS** Somatic cell score 2.78 76 % Rel.  
**SCE** Sire calving ease 1.9 % Diff. 79 % Rel.  
**DCE** Daughter calving ease 1.3 % Diff. 58 % Rel.  
**SSB** Sire stillbirth 5.5 % 65 % Rel.  
**DSB** Daughter stillbirth 4.3 % 57 % Rel.

♂ **Garido** (♂ Gymnast)

♀ Westerade Annie 174 (3) VG 87 (♂ **Finder**)  
3/2 10439 4,98 520 4,03 421

♀ Westerade Annie 167 (4) VG 88 (♂ **AltaSpring**)  
5/4 12420 3,91 486 3,62 449

♀ Westerade Annie 156 (1) VG 87 (♂ **Goldday**)



Golf

Proofs: 08-2023

159002 Golf		-1	0	+1	+2
PTAT	Type				+1.66
UDC	Udder Composite				+1.87
FLC	Feet & Legs Composite				+1.46
BSC	Body Composite				+1.15
Stature	Short				+1.27 Tall
Strength	Frail				+1.16 Strong
Body depth	Shallow				+0.65 Deep
Dairy form	Tight Ribbed				+0.51 Open Ribbed
Rump angle	High Pins				-0.73 Sloped
Thurl width	Narrow				+1.25 Wide
Rear leg (side view)	Posty				-0.95 Sickled
Rear leg (rear view)	Hock-in				+1.98 Straight
Foot angle	Low Angle				+1.20 Steep Angle
Feet & Legs Score	Low				+1.57 High
Fore udder attachment	Loose				+2.43 Strong
Rear udder height	Low				+2.49 High
Rear udder width	Narrow				+2.37 Wide
Udder cleft	Weak				+0.52 Strong
Udder depth	Deep				+2.09 Shallow
Front teat placement	Wide				+0.13 Close
Rear teat placement	Wide				+0.16 Close
Teat length	Short				+0.39 Long

# Benedetto



811683  
624HO09108  
HOLDEUM001505219849



GGI-SPERMEX  
Genetics made in Germany

Born: 2021-10-18

Beta Caseine A2A2 | Kappa Caseine BB | aAa 234156 |

**TPI 2825**  
**NM\$ +820**

**Milk lbs** +1036  
**Fat** +0.05 %  
**Protein** +0.05 %  
**+53 lbs** **+46 lbs**

**Daughters:** 0  
**Herds:** 0  
**Reliability:** 78 %

**PL** Productive life +5.3 74 % Rel.  
**DPR** Daughter pregnancy rate +3.4 73 % Rel.  
**SCS** Somatic cell score 2.74 74 % Rel.  
**SCE** Sire calving ease 1.5 % Diff. 60 % Rel.  
**DCE** Daughter calving ease 1.0 % Diff. 52 % Rel.  
**SSB** Sire stillbirth 5.2 % 54 % Rel.  
**DSB** Daughter stillbirth 2.9 % 51 % Rel.

♂ **Bender** (♂ Bali)

♀ Lenny (♂ **Garido**)  
100 T. 5080 4,35 221 3,37 171

♀ Lina (1) GP 83 (♂ **Balu**)  
2/1 7680 4,24 326 3,82 293

♀ Lilly (1) VG 86 (♂ **Commander**)



Benedetto

Proofs: 08-2023

811683 Benedetto		-1	0	+1	+2
PTAT	Type				+0.78
UDC	Udder Composite				+0.97
FLC	Feet & Legs Composite				+0.82
BSC	Body Composite				-0.28
Stature	Short				-0.09 Tall
Strength	Frail				-0.25 Strong
Body depth	Shallow				-0.72 Deep
Dairy form	Tight Ribbed				+0.11 Open Ribbed
Rump angle	High Pins				-1.00 Sloped
Thurl width	Narrow				+0.16 Wide
Rear leg (side view)	Posty				+0.44 Sickled
Rear leg (rear view)	Hock-in				+0.66 Straight
Foot angle	Low Angle				+0.22 Steep Angle
Feet & Legs Score	Low				+0.81 High
Fore udder attachment	Loose				+1.36 Strong
Rear udder height	Low				+1.11 High
Rear udder width	Narrow				+0.95 Wide
Udder cleft	Weak				+0.03 Strong
Udder depth	Deep				+0.99 Shallow
Front teat placement	Wide				-0.30 Close
Rear teat placement	Wide				-0.31 Close
Teat length	Short				-0.10 Long

# Giroud



823285  
624HO09088  
HOLDEUM000124167925



Born: 2021-5-30 HAS GIROUD  
Beta Caseine A2A2 | Kappa Caseine BB | aAa 423165 |

**TPI 2825**  
**NM\$ +805**

Milk lbs +2142  
Fat -0.06 %  
Protein -0.01 %  
+64 lbs +63 lbs

Daughters: 0  
Herds: 0  
Reliability: 78 %

PL Productive life +4.2 74 % Rel.  
DPR Daughter pregnancy rate -1.9 73 % Rel.  
SCS Somatic cell score 2.59 74 % Rel.  
SCE Sire calving ease 2.2 % Diff. 61 % Rel.  
DCE Daughter calving ease 2.1 % Diff. 55 % Rel.  
SSB Sire stillbirth 5.8 % 55 % Rel.  
DSB Daughter stillbirth 5.0 % 53 % Rel.

♂ **Gladius** (♂ Gazebo)

♀ RZH Seattle (1) VG 85 (♂ **Dateline**)  
200 T. 7914 3,84 304 3,17 251

♀ Ri-Val-Re Rasp 2131-ET (♂ **Rubi-Asp**)  
1/1 12302 4,53 557 3,38 416

♀ MS Sofias Serendipity RC (♂ **Supershot**)



Giroud

Proofs: 08-2023

823285 Giroud		-1	0	+1	+2
PTAT	Type				+1.77
UDC	Udder Composite				+2.16
FLC	Feet & Legs Composite				+0.48
BSC	Body Composite				-0.62
Stature	Short				+1.11 Tall
Strength	Frail				-0.33 Strong
Body depth	Shallow				-0.07 Deep
Dairy form	Tight Ribbed				+1.51 Open Ribbed
Rump angle	High Pins				+0.94 Sloped
Thurl width	Narrow				+0.46 Wide
Rear leg (side view)	Posty				-1.59 Sickled
Rear leg (rear view)	Hock-in				+0.52 Straight
Foot angle	Low Angle				+1.27 Steep Angle
Feet & Legs Score	Low				+0.75 High
Fore udder attachment	Loose				+2.47 Strong
Rear udder height	Low				+2.89 High
Rear udder width	Narrow				+2.34 Wide
Udder cleft	Weak				+1.16 Strong
Udder depth	Deep				+2.12 Shallow
Front teat placement	Wide				+0.68 Close
Rear teat placement	Wide				+0.96 Close
Teat length	Short				+0.28 Long

# Pessoa



823279  
624HO09085  
HOLDEUM000124167904



Born: 2021-3-19 HAS PESSOA  
Beta Caseine A2A2 | Kappa Caseine AB | aAa 342561 |

**TPI 2813**  
**NM\$ +770**

Milk lbs +1431  
Fat +0.08 %  
Protein +0.05 %  
+79 lbs +60 lbs

Daughters: 0  
Herds: 0  
Reliability: 78 %

PL Productive life +3.1 74 % Rel.  
DPR Daughter pregnancy rate -2.3 73 % Rel.  
SCS Somatic cell score 2.65 74 % Rel.  
SCE Sire calving ease 1.9 % Diff. 61 % Rel.  
DCE Daughter calving ease 2.6 % Diff. 56 % Rel.  
SSB Sire stillbirth 5.1 % 56 % Rel.  
DSB Daughter stillbirth 6.5 % 54 % Rel.

♂ **Proximo** (♂ Prosperous)

♀ RZH Seattle (1) VG 85 (♂ **Dateline**)  
200 T. 7914 3,84 304 3,17 251

♀ Ri-Val-Re Rasp 2131-ET (♂ **Rubi-Asp**)  
1/1 12302 4,53 557 3,38 416

♀ MS Sofias Serendipity RC (♂ **Supershot**)



Pessoa

Proofs: 08-2023

823279 Pessoa		-1	0	+1	+2
PTAT	Type				+1.61
UDC	Udder Composite				+1.75
FLC	Feet & Legs Composite				+0.90
BSC	Body Composite				-0.28
Stature	Short				+0.76 Tall
Strength	Frail				+0.11 Strong
Body depth	Shallow				+0.20 Deep
Dairy form	Tight Ribbed				+1.32 Open Ribbed
Rump angle	High Pins				+0.84 Sloped
Thurl width	Narrow				+0.40 Wide
Rear leg (side view)	Posty				-1.27 Sickled
Rear leg (rear view)	Hock-in				+1.03 Straight
Foot angle	Low Angle				+1.44 Steep Angle
Feet & Legs Score	Low				+1.00 High
Fore udder attachment	Loose				+1.80 Strong
Rear udder height	Low				+2.39 High
Rear udder width	Narrow				+2.42 Wide
Udder cleft	Weak				+1.08 Strong
Udder depth	Deep				+0.98 Shallow
Front teat placement	Wide				+0.95 Close
Rear teat placement	Wide				+1.20 Close
Teat length	Short				+0.03 Long

# Tubus



823283  
624HO09083  
HOLDEUM001504721087



Born: 2021-4-1 DHG TUBUS  
Beta Caseine A1A2 | Kappa Caseine AA | aAa 234156 |

**TPI 2813**  
**NM\$ +798**

Milk lbs +1188  
Fat +0.01 %  
Protein +0.04 %  
+49 lbs +50 lbs

Daughters: 0  
Herds: 0  
Reliability: 81 %

PL Productive life +5.7 77 % Rel.  
DPR Daughter pregnancy rate +1.0 77 % Rel.  
SCS Somatic cell score 2.79 78 % Rel.  
SCE Sire calving ease 1.8 % Diff. 71 % Rel.  
DCE Daughter calving ease 1.8 % Diff. 61 % Rel.  
SSB Sire stillbirth 5.1 % 64 % Rel.  
DSB Daughter stillbirth 4.9 % 59 % Rel.

♂ Try Me ( ♂ Resolve)

♀ Cookiecutter Honorin-ET (1) VG 87 ( ♂ Basic)  
1/1 13715 3,56 488 3,07 421

♀ Cookiecutter MDY Honorit-ET ( ♂ Modesty)

♀ Cookiecutter SSHOT Honor (1) VG 85 ( ♂ Supershot)



Tubus

Proofs: 08-2023

823283 Tubus		-1	0	+1	+2
PTAT	Type				+1.74
UDC	Udder Composite				+1.70
FLC	Feet & Legs Composite				+0.38
BSC	Body Composite				-0.16
Stature	Short				+1.71 Tall
Strength	Frail				+0.00 Strong
Body depth	Shallow				+0.10 Deep
Dairy form	Tight Ribbed				+1.18 Open Ribbed
Rump angle	High Pins				+1.03 Sloped
Thurl width	Narrow				-0.01 Wide
Rear leg (side view)	Posty				-0.51 Sickled
Rear leg (rear view)	Hock-in				+0.45 Straight
Foot angle	Low Angle				+0.93 Steep Angle
Feet & Legs Score	Low				+0.78 High
Fore udder attachment	Loose				+2.12 Strong
Rear udder height	Low				+2.40 High
Rear udder width	Narrow				+2.10 Wide
Udder cleft	Weak				+0.63 Strong
Udder depth	Deep				+2.05 Shallow
Front teat placement	Wide				+1.05 Close
Rear teat placement	Wide				+1.01 Close
Teat length	Short				-0.56 Long

# Precision



575319  
624HO09084  
HOLDEUM000363341434



Born: 2021-4-15 PRECISION  
Beta Caseine A2A2 | Kappa Caseine BB | aAa 234156 | H1C

**TPI 2776**  
**NM\$ +778**

Milk lbs +1175  
Fat +0.07 %  
Protein +0.05 %  
+66 lbs +50 lbs

Daughters: 0  
Herds: 0  
Reliability: 79 %

PL Productive life +4.6 74 % Rel.  
DPR Daughter pregnancy rate -2.0 73 % Rel.  
SCS Somatic cell score 2.49 74 % Rel.  
SCE Sire calving ease 2.0 % Diff. 61 % Rel.  
DCE Daughter calving ease 2.4 % Diff. 55 % Rel.  
SSB Sire stillbirth 5.9 % 56 % Rel.  
DSB Daughter stillbirth 6.5 % 54 % Rel.

♂ Proximo ( ♂ Prosperous)

♀ Milta (2) VG 85 ( ♂ Swift)  
3/2 11222 3,95 443 3,51 394

♀ Moni (2) VG 85 ( ♂ Gymnast)  
4/3 12324 4,20 518 3,57 440

♀ Meiske (2) GP 84 ( ♂ Sunfish RF)



Precision

Proofs: 08-2023

575319 Precision		-1	0	+1	+2
PTAT	Type				+1.94
UDC	Udder Composite				+1.77
FLC	Feet & Legs Composite				+0.66
BSC	Body Composite				+0.37
Stature	Short				+1.65 Tall
Strength	Frail				+0.57 Strong
Body depth	Shallow				+0.69 Deep
Dairy form	Tight Ribbed				+1.28 Open Ribbed
Rump angle	High Pins				+0.34 Sloped
Thurl width	Narrow				+0.73 Wide
Rear leg (side view)	Posty				-0.90 Sickled
Rear leg (rear view)	Hock-in				+0.88 Straight
Foot angle	Low Angle				+1.01 Steep Angle
Feet & Legs Score	Low				+1.01 High
Fore udder attachment	Loose				+2.48 Strong
Rear udder height	Low				+2.58 High
Rear udder width	Narrow				+2.23 Wide
Udder cleft	Weak				+0.37 Strong
Udder depth	Deep				+2.19 Shallow
Front teat placement	Wide				+0.32 Close
Rear teat placement	Wide				-0.14 Close
Teat length	Short				-0.59 Long

# Camus



769500  
624H009080  
HOLDEUM000817478162



Born: 2020-6-15 CAMUS

Beta Caseine A2A2 | Kappa Caseine AB | aAa 243651 |

**TPI 2772**  
**NM\$ +821**

Milk lbs +956  
Fat +0.11 %  
Protein +0.06 %  
+70 lbs +46 lbs

Daughters: 0  
Herds: 0  
Reliability: 81 %

PL Productive life +4.8 76 % Rel.  
DPR Daughter pregnancy rate -0.7 76 % Rel.  
SCS Somatic cell score 2.67 77 % Rel.  
SCE Sire calving ease 2.2 % Diff. 83 % Rel.  
DCE Daughter calving ease 2.1 % Diff. 59 % Rel.  
SSB Sire stillbirth 6.7 % 71 % Rel.  
DSB Daughter stillbirth 4.6 % 58 % Rel.

♂ **VH Crown** (♂ DG Charley)

♀ Britta (3) VG 86 (♂ **Semino**)  
3/2 10173 4,08 415 3,66 372

♀ Bridget P (4) GP 83 (♂ **Powerball P**)  
5/4 10898 3,67 400 3,37 367

♀ Bridget-ET (1) GP 83 (♂ **Galaxy**)



Camus

Proofs: 08-2023

769500 Camus		-1	0	+1	+2
PTAT	Type				+1.20
UDC	Udder Composite				+1.59
FLC	Feet & Legs Composite				+0.77
BSC	Body Composite				-0.81
Stature	Short				+0.47 Tall
Strength	Frail				-0.71 Strong
Body depth	Shallow				-0.61 Deep
Dairy form	Tight Ribbed				+0.75 Open Ribbed
Rump angle	High Pins				-0.46 Sloped
Thurl width	Narrow				-0.02 Wide
Rear leg (side view)	Posty				+0.66 Sickled
Rear leg (rear view)	Hock-in				+0.69 Straight
Foot angle	Low Angle				+0.80 Steep Angle
Feet & Legs Score	Low				+0.87 High
Fore udder attachment	Loose				+1.79 Strong
Rear udder height	Low				+2.26 High
Rear udder width	Narrow				+1.35 Wide
Udder cleft	Weak				-0.02 Strong
Udder depth	Deep				+2.07 Shallow
Front teat placement	Wide				+0.03 Close
Rear teat placement	Wide				+0.31 Close
Teat length	Short				+0.46 Long

# Ripley



575224  
624H009087  
HOLDEUM000124244711



Born: 2021-2-25 AGH RIPLEY

Beta Caseine A2A2 | Kappa Caseine BB | aAa 243615 |

**TPI 2634**  
**NM\$ +662**

Milk lbs +1315  
Fat +0.04 %  
Protein +0.04 %  
+63 lbs +54 lbs

Daughters: 0  
Herds: 0  
Reliability: 81 %

PL Productive life +2.7 76 % Rel.  
DPR Daughter pregnancy rate -2.3 76 % Rel.  
SCS Somatic cell score 3.04 77 % Rel.  
SCE Sire calving ease 2.1 % Diff. 62 % Rel.  
DCE Daughter calving ease 2.1 % Diff. 60 % Rel.  
SSB Sire stillbirth 6.0 % 59 % Rel.  
DSB Daughter stillbirth 5.2 % 59 % Rel.

♂ **Radar** (♂ Imax)

♀ Zuerich (1) GP 84 (♂ **Gywer RDC**)  
2/1 11390 2,95 336 3,28 374

♀ Venezia (2) VG 87 (♂ **Malinus**)  
2/1 14162 3,56 504 3,26 462

♀ Larissa (2) VG 86 (♂ **Aloud**)



Ripley

Proofs: 08-2023

575224 Ripley		-1	0	+1	+2
PTAT	Type				+1.40
UDC	Udder Composite				+1.09
FLC	Feet & Legs Composite				+0.90
BSC	Body Composite				-0.17
Stature	Short				+1.16 Tall
Strength	Frail				-0.03 Strong
Body depth	Shallow				+0.01 Deep
Dairy form	Tight Ribbed				+1.01 Open Ribbed
Rump angle	High Pins				+0.34 Sloped
Thurl width	Narrow				+0.35 Wide
Rear leg (side view)	Posty				+0.33 Sickled
Rear leg (rear view)	Hock-in				+0.82 Straight
Foot angle	Low Angle				+0.99 Steep Angle
Feet & Legs Score	Low				+1.16 High
Fore udder attachment	Loose				+1.20 Strong
Rear udder height	Low				+1.73 High
Rear udder width	Narrow				+1.44 Wide
Udder cleft	Weak				+0.32 Strong
Udder depth	Deep				+1.61 Shallow
Front teat placement	Wide				-0.12 Close
Rear teat placement	Wide				-0.25 Close
Teat length	Short				+0.49 Long

# Riddick



823277  
624HO09090  
HOLDEUM000363475697



GGI-SPERMEX  
Genetics made in Germany

Born: 2021-1-27 MB RIDDICK

Beta Caseine A1A2 | Kappa Caseine AA | aAa 345216 | |

**TPI 2625**  
**NM\$ +739**

Milk lbs +676  
Fat +0.15 %  
Protein +0.05 %  
+69 lbs +36 lbs

Daughters: 0  
Herds: 0  
Reliability: 81 %

PL Productive life +4.6 76 % Rel.  
DPR Daughter pregnancy rate -2.4 76 % Rel.  
SCS Somatic cell score 2.85 77 % Rel.  
SCE Sire calving ease 2.0 % Diff. 63 % Rel.  
DCE Daughter calving ease 2.0 % Diff. 61 % Rel.  
SSB Sire stillbirth 6.0 % 60 % Rel.  
DSB Daughter stillbirth 4.7 % 60 % Rel.

♂ Radar (♂ Imax)

♀ MB 368 (1) GP 83 (♂ Huey)  
2/1 11533 3,73 430 3,32 383

♀ MB MAR Junis (1) VG 86 (♂ Outlast)  
2/2 12280 4,07 500 3,52 432

♀ COL Jule Mr (2) GP 83 (♂ Battlecry)



Riddick

Proofs: 08-2023

823277 Riddick		-1	0	+1	+2
PTAT	Type				+1.14
UDC	Udder Composite				+1.39
FLC	Feet & Legs Composite				+0.15
BSC	Body Composite				-0.29
Stature	Short				+0.72 Tall
Strength	Frail				-0.26 Strong
Body depth	Shallow				-0.36 Deep
Dairy form	Tight Ribbed				+0.62 Open Ribbed
Rump angle	High Pins				+0.27 Sloped
Thurl width	Narrow				+0.28 Wide
Rear leg (side view)	Posty				+0.86 Sickled
Rear leg (rear view)	Hock-in				+0.00 Straight
Foot angle	Low Angle				-0.06 Steep Angle
Feet & Legs Score	Low				+0.43 High
Fore udder attachment	Loose				+1.75 Strong
Rear udder height	Low				+1.84 High
Rear udder width	Narrow				+1.01 Wide
Udder cleft	Weak				+0.12 Strong
Udder depth	Deep				+2.38 Shallow
Front teat placement	Wide				-0.31 Close
Rear teat placement	Wide				-0.46 Close
Teat length	Short				+0.08 Long

# Garido



811606  
624HO09030  
HOLDEUM000122629481



GGI-SPERMEX  
Genetics made in Germany

Born: 2017-8-24 GARIDO

Beta Caseine A1A2 | Kappa Caseine AE | aAa 315426 | | H1C

**TPI 2862**  
**NM\$ +766**

Milk lbs +1472  
Fat +0.11 %  
Protein +0.03 %  
+90 lbs +55 lbs

Daughters: 3103  
Herds: 829  
Reliability: 93 %

PL Productive life +2.1 89 % Rel.  
DPR Daughter pregnancy rate -1.0 90 % Rel.  
SCS Somatic cell score 2.70 90 % Rel.  
SCE Sire calving ease 2.1 % Diff. 85 % Rel.  
DCE Daughter calving ease 1.6 % Diff. 78 % Rel.  
SSB Sire stillbirth 6.1 % 71 % Rel.  
DSB Daughter stillbirth 4.2 % 81 % Rel.

♂ Gymnast (♂ Doorsopen)

♀ Sunrise (2) VG 86 (♂ Penley)  
4/4 10730 4,16 446 3,68 395

♀ Shirley (♂ Boss)

♀ Sambuca (3) VG 86 (♂ Beacon)



BWG Glarida, 2nd lact

Proofs: 08-2023

811606 Garido		-1	0	+1	+2
PTAT	Type				+1.37
UDC	Udder Composite				+1.49
FLC	Feet & Legs Composite				+0.83
BSC	Body Composite				+1.13
Stature	Short				+1.28 Tall
Strength	Frail				+1.03 Strong
Body depth	Shallow				+0.59 Deep
Dairy form	Tight Ribbed				+0.60 Open Ribbed
Rump angle	High Pins				-0.75 Sloped
Thurl width	Narrow				+1.93 Wide
Rear leg (side view)	Posty				-0.63 Sickled
Rear leg (rear view)	Hock-in				+1.15 Straight
Foot angle	Low Angle				+0.50 Steep Angle
Feet & Legs Score	Low				+1.06 High
Fore udder attachment	Loose				+1.26 Strong
Rear udder height	Low				+2.54 High
Rear udder width	Narrow				+2.62 Wide
Udder cleft	Weak				+1.14 Strong
Udder depth	Deep				+1.00 Shallow
Front teat placement	Wide				-0.65 Close
Rear teat placement	Wide				+0.60 Close
Teat length	Short				+0.77 Long



# Rafting



684971  
624H009017  
HOLDEUM000770601887



Born: 2017-7-28 SIEMERS RUW RAFTING

Beta Caseine A1A2 | Kappa Caseine AB | aAa 342516 |

**TPI 2849**  
**NM\$ +710**

Milk lbs +1546  
Fat +0.08 %  
Protein +0.04 %  
+82 lbs +61 lbs

Daughters: 1917  
Herds: 756  
Reliability: 92 %

PL	Productive life	+2.7	88 % Rel.
DPR	Daughter pregnancy rate	-2.2	89 % Rel.
SCS	Somatic cell score	2.81	90 % Rel.
SCE	Sire calving ease	2.3 % Diff.	83 % Rel.
DCE	Daughter calving ease	2.6 % Diff.	78 % Rel.
SSB	Sire stillbirth	6.9 %	72 % Rel.
DSB	Daughter stillbirth	6.6 %	81 % Rel.

- ♂ **Ragen** ( ♂ Stoic)
- ♀ Siemers Silver-D-Rozza-ET ( ♂ **Silver**)
- ♀ Siemers Doorman Rozette (1) VG 88 ( ♂ **Doorman**)  
2/2 17731 4,26 756 3,17 562
- ♀ Cherry Crest Manoman Roz (2) EX 91 ( ♂ **Man-O-Man**)



SL Kara, 2nd lact

Proofs: 08-2023

684971 Rafting		-1	0	+1	+2
PTAT	Type				+2.35
UDC	Udder Composite				+1.89
FLC	Feet & Legs Composite				+1.96
BSC	Body Composite				+0.90
Stature	Short				+2.02 Tall
Strength	Frail				+0.99 Strong
Body depth	Shallow				+0.76 Deep
Dairy form	Tight Ribbed				+0.97 Open Ribbed
Rump angle	High Pins				-1.34 Sloped
Thurl width	Narrow				+0.70 Wide
Rear leg (side view)	Posty				-0.48 Sickled
Rear leg (rear view)	Hock-in				+2.53 Straight
Foot angle	Low Angle				+3.06 Steep Angle
Feet & Legs Score	Low				+2.10 High
Fore udder attachment	Loose				+2.68 Strong
Rear udder height	Low				+2.41 High
Rear udder width	Narrow				+2.08 Wide
Udder cleft	Weak				+1.60 Strong
Udder depth	Deep				+2.26 Shallow
Front teat placement	Wide				+1.04 Close
Rear teat placement	Wide				+1.23 Close
Teat length	Short				+0.16 Long

# Super Uno



619175  
624H009020  
HOLDEUM000359736504



Born: 2017-4-10 PG SUPER UNO

Beta Caseine A1A2 | Kappa Caseine AE | aAa 234156 |

**TPI 2769**  
**NM\$ +750**

Milk lbs +1746  
Fat +0.00 %  
Protein -0.01 %  
+68 lbs +51 lbs

Daughters: 129  
Herds: 52  
Reliability: 90 %

PL	Productive life	+4.5	85 % Rel.
DPR	Daughter pregnancy rate	+1.7	83 % Rel.
SCS	Somatic cell score	2.71	87 % Rel.
SCE	Sire calving ease	2.1 % Diff.	75 % Rel.
DCE	Daughter calving ease	1.9 % Diff.	71 % Rel.
SSB	Sire stillbirth	6.4 %	67 % Rel.
DSB	Daughter stillbirth	5.0 %	72 % Rel.

- ♂ **Superhero** ( ♂ Supershot)
- ♀ Ladylike (2) VG 86 ( ♂ **Missouri**)  
3/2 12140 3,86 468 3,54 430
- ♀ HLM Lanette (1) VG 85 ( ♂ **Numero Uno**)  
3/2 10607 4,65 493 3,66 388
- ♀ Lana (5) VG 86 ( ♂ **Planet**)



Susan, 1st lact

Proofs: 08-2023

619175 Super Uno		-1	0	+1	+2
PTAT	Type				+0.65
UDC	Udder Composite				+0.64
FLC	Feet & Legs Composite				-0.07
BSC	Body Composite				+0.77
Stature	Short				+0.51 Tall
Strength	Frail				+0.45 Strong
Body depth	Shallow				+0.12 Deep
Dairy form	Tight Ribbed				-0.16 Open Ribbed
Rump angle	High Pins				-0.71 Sloped
Thurl width	Narrow				+1.45 Wide
Rear leg (side view)	Posty				+0.88 Sickled
Rear leg (rear view)	Hock-in				-0.54 Straight
Foot angle	Low Angle				-0.47 Steep Angle
Feet & Legs Score	Low				+0.27 High
Fore udder attachment	Loose				+1.40 Strong
Rear udder height	Low				+1.30 High
Rear udder width	Narrow				+1.32 Wide
Udder cleft	Weak				-0.41 Strong
Udder depth	Deep				+0.57 Shallow
Front teat placement	Wide				-1.74 Close
Rear teat placement	Wide				-0.79 Close
Teat length	Short				+1.62 Long

# Imano



811613  
624HO09052  
HOLDEUM000360243452



Born: 2018-1-6 IMANO  
Beta Caseine A1A2 | Kappa Caseine AA | aAa 432561 | |

**TPI 2740**  
**NM\$ +784**

Milk lbs +664  
Fat +0.20 %  
Protein +0.07 %  
+82 lbs +40 lbs

Daughters: 1543  
Herds: 427  
Reliability: 91 %

PL Productive life +4.7 87 % Rel.  
DPR Daughter pregnancy rate -1.5 88 % Rel.  
SCS Somatic cell score 2.90 89 % Rel.  
SCE Sire calving ease 2.3 % Diff. 83 % Rel.  
DCE Daughter calving ease 1.8 % Diff. 77 % Rel.  
SSB Sire stillbirth 6.2 % 71 % Rel.  
DSB Daughter stillbirth 5.0 % 79 % Rel.

♂ Imax (♂ AltaSpring)

♀ Denver (3) VG 88 (♂ Kooper)  
6/5 15036 4,07 612 3,40 511

♀ DE-SU Maurice 2618-ET (2) VG 85 (♂ Maurice)  
5/4 12408 4,30 533 3,26 405

♀ DE-SU 1061 (1)G 76 (♂ Shamrock)



Imala, 1st lact

Proofs: 08-2023

811613 Imano		-1	0	+1	+2
PTAT	Type				+0.96
UDC	Udder Composite				+1.42
FLC	Feet & Legs Composite				+0.57
BSC	Body Composite				+0.10
Stature	Short				+0.34 Tall
Strength	Frail				+0.02 Strong
Body depth	Shallow				-0.30 Deep
Dairy form	Tight Ribbed				+0.04 Open Ribbed
Rump angle	High Pins				+0.28 Sloped
Thurl width	Narrow				+0.27 Wide
Rear leg (side view)	Posty				-1.85 Sickled
Rear leg (rear view)	Hock-in				+0.42 Straight
Foot angle	Low Angle				+1.57 Steep Angle
Feet & Legs Score	Low				+0.67 High
Fore udder attachment	Loose				+1.32 Strong
Rear udder height	Low				+1.81 High
Rear udder width	Narrow				+1.34 Wide
Udder cleft	Weak				+0.35 Strong
Udder depth	Deep				+1.99 Shallow
Front teat placement	Wide				+0.00 Close
Rear teat placement	Wide				+0.11 Close
Teat length	Short				+0.39 Long

# Gigabyte



573654  
624HO09039  
HOLDEUM000122835602



Born: 2017-10-31 SH GIGABYTE  
Beta Caseine A2A2 | Kappa Caseine AA | aAa 243156 | | H1C

**TPI 2737**  
**NM\$ +626**

Milk lbs +1328  
Fat -0.02 %  
Protein +0.01 %  
+46 lbs +44 lbs

Daughters: 3987  
Herds: 1401  
Reliability: 93 %

PL Productive life +4.0 88 % Rel.  
DPR Daughter pregnancy rate -0.3 89 % Rel.  
SCS Somatic cell score 2.63 90 % Rel.  
SCE Sire calving ease 2.4 % Diff. 87 % Rel.  
DCE Daughter calving ease 1.3 % Diff. 88 % Rel.  
SSB Sire stillbirth 6.3 % 74 % Rel.  
DSB Daughter stillbirth 4.7 % 83 % Rel.

♂ Gymnast (♂ Doorsopen)

♀ SH Josie (4) EX 90 (♂ Silver)  
4/4 17297 3,79 655 3,47 601

♀ SH Model Josi (4) VG 87 (♂ Model)  
6/5 15619 3,35 523 3,35 523

♀ SH Jumper (2) VG 88 (♂ Man-O-Man)



Chashmere, 1st lact

Proofs: 08-2023

573654 Gigabyte		-1	0	+1	+2
PTAT	Type				+1.80
UDC	Udder Composite				+2.27
FLC	Feet & Legs Composite				+0.94
BSC	Body Composite				+0.93
Stature	Short				+1.92 Tall
Strength	Frail				+0.81 Strong
Body depth	Shallow				+0.04 Deep
Dairy form	Tight Ribbed				+0.74 Open Ribbed
Rump angle	High Pins				+1.21 Sloped
Thurl width	Narrow				+1.47 Wide
Rear leg (side view)	Posty				-0.31 Sickled
Rear leg (rear view)	Hock-in				+1.74 Straight
Foot angle	Low Angle				+1.18 Steep Angle
Feet & Legs Score	Low				+1.15 High
Fore udder attachment	Loose				+2.13 Strong
Rear udder height	Low				+4.36 High
Rear udder width	Narrow				+3.46 Wide
Udder cleft	Weak				+0.84 Strong
Udder depth	Deep				+2.19 Shallow
Front teat placement	Wide				-0.95 Close
Rear teat placement	Wide				-0.45 Close
Teat length	Short				+1.75 Long

# Casino



156583  
624HO09022  
HOLNLDM000865720444



Born: 2017-2-11 CASINO

Beta Caseine A2A2 | Kappa Caseine | aAa 351426 |

**TPI 2619**  
**NM\$ +728**

Milk lbs +1632  
Fat +0.03 %  
Protein +0.02 %  
+73 lbs +57 lbs

Daughters: 5542  
Herds: 1273  
Reliability: 93 %

PL Productive life +3.4 90 % Rel.  
DPR Daughter pregnancy rate -2.1 91 % Rel.  
SCS Somatic cell score 2.82 90 % Rel.  
SCE Sire calving ease 1.8 % Diff. 86 % Rel.  
DCE Daughter calving ease 1.7 % Diff. 80 % Rel.  
SSB Sire stillbirth 5.6 % 74 % Rel.  
DSB Daughter stillbirth 4.3 % 82 % Rel.

♂ **DG Charley** (♂ Supershot)

♀ Broeks Madibet (♂ **Mardi Gras**)

♀ Broeks Plabet (1) VG 88 (♂ **Planet**)

2/2 11296 4,30 486 3,51 397

♀ Broeks Betty (1) VG 88 (♂ **Snowman**)



Antille, 2nd lact

Proofs: 08-2023

156583 Casino		-1	0	+1	+2
PTAT	Type				+0.41
UDC	Udder Composite				-0.06
FLC	Feet & Legs Composite				+0.30
BSC	Body Composite				-0.46
Stature	Short				+0.60 Tall
Strength	Frail				-0.07 Strong
Body depth	Shallow				+0.45 Deep
Dairy form	Tight Ribbed				+1.37 Open Ribbed
Rump angle	High Pins				+1.83 Sloped
Thurl width	Narrow				+0.36 Wide
Rear leg (side view)	Posty				+0.10 Sickled
Rear leg (rear view)	Hock-in				+0.29 Straight
Foot angle	Low Angle				+0.53 Steep Angle
Feet & Legs Score	Low				+0.43 High
Fore udder attachment	Loose				+0.13 Strong
Rear udder height	Low				+0.27 High
Rear udder width	Narrow				+0.53 Wide
Udder cleft	Weak				-0.34 Strong
Udder depth	Deep				-0.57 Shallow
Front teat placement	Wide				+0.56 Close
Rear teat placement	Wide				+0.17 Close
Teat length	Short				+0.05 Long

# Faramir Red



960809  
624WW09112  
HOLDEUM000667763499



Born: 2022-2-24 HLB HWH FARAMIR

Beta Caseine A2A2 | Kappa Caseine AB | aAa 234165 |

**TPI 2888**  
**NM\$ +879**

Milk lbs +1164  
Fat +0.13 %  
Protein +0.06 %  
+84 lbs +55 lbs

Daughters: 0  
Herds: 0  
Reliability: 79 %

PL Productive life +5.5 73 % Rel.  
DPR Daughter pregnancy rate +0.0 73 % Rel.  
SCS Somatic cell score 2.64 74 % Rel.  
SCE Sire calving ease 1.6 % Diff. 60 % Rel.  
DCE Daughter calving ease 2.0 % Diff. 56 % Rel.  
SSB Sire stillbirth 6.1 % 54 % Rel.  
DSB Daughter stillbirth 6.4 % 54 % Rel.

♂ **Freestyle** (♂ Gywer RDC)

♀ HLB Peru P RDC (2) VG 85 (♂ **Solitair P**)

2/1 12965 4,00 519 3,57 463

♀ HLB Pinie P (1) GP 84 (♂ **Mission P RDC**)

4/3 11518 4,41 508 3,46 399

♀ HWH Pixel (0) VG 85 (♂ **Background**)



Faramir Red

Proofs: 08-2023

960809 Faramir		-1	0	+1	+2
PTAT	Type				+0.92
UDC	Udder Composite				+1.23
FLC	Feet & Legs Composite				+0.51
BSC	Body Composite				+0.72
Stature	Short				+1.27 Tall
Strength	Frail				+0.46 Strong
Body depth	Shallow				+0.09 Deep
Dairy form	Tight Ribbed				+0.01 Open Ribbed
Rump angle	High Pins				+0.46 Sloped
Thurl width	Narrow				+0.57 Wide
Rear leg (side view)	Posty				-0.53 Sickled
Rear leg (rear view)	Hock-in				+0.97 Straight
Foot angle	Low Angle				+1.03 Steep Angle
Feet & Legs Score	Low				+0.66 High
Fore udder attachment	Loose				+1.54 Strong
Rear udder height	Low				+1.55 High
Rear udder width	Narrow				+1.40 Wide
Udder cleft	Weak				+0.11 Strong
Udder depth	Deep				+2.14 Shallow
Front teat placement	Wide				+0.14 Close
Rear teat placement	Wide				+0.12 Close
Teat length	Short				-0.09 Long

# Spooky Red



917693  
624WW09113  
HOLDEUM000771139284



GGI-SPERMEX  
Genetics made in Germany

Born: 2021-10-10 3STAR RUW SPEEDY RED

Beta Caseine A1A1 | Kappa Caseine BB | aAa 342516 |

**TPI 2854**  
**NM\$ +901**

**Milk lbs** +1764  
**Fat** +0.01 %  
**Protein** +0.01 %  
**Fat** +72 lbs  
**Protein** +57 lbs

**Daughters:** 0  
**Herds:** 0  
**Reliability:** 78 %

**PL** Productive life +5.6 73 % Rel.  
**DPR** Daughter pregnancy rate -0.1 73 % Rel.  
**SCS** Somatic cell score 2.63 74 % Rel.  
**SCE** Sire calving ease 1.9 % Diff. 60 % Rel.  
**DCE** Daughter calving ease 2.9 % Diff. 52 % Rel.  
**SSB** Sire stillbirth 5.7 % 54 % Rel.  
**DSB** Daughter stillbirth 5.4 % 51 % Rel.

♂ Star P RDC (♂ Solitair P)

♀ Voorhof K&L Kacy (1) VG 85 (♂ Match P RDC)  
1/1 11200 3,86 432 3,21 360

♀ WIL Kor RDC (♂ Salvatore RDC)  
3/2 10659 4,03 430 3,25 346

♀ WIL K 25 (4) EX 90 (♂ Brekem RDC)



Spooky Red

Proofs: 08-2023

917693 Spooky Red		-1	0	+1	+2
PTAT	Type				+1.09
UDC	Udder Composite				+1.04
FLC	Feet & Legs Composite				+0.67
BSC	Body Composite				-0.12
Stature	Short				+0.61 Tall
Strength	Frail				-0.02 Strong
Body depth	Shallow				-0.09 Deep
Dairy form	Tight Ribbed				+0.70 Open Ribbed
Rump angle	High Pins				+0.20 Sloped
Thurl width	Narrow				+0.54 Wide
Rear leg (side view)	Posty				-0.07 Sickled
Rear leg (rear view)	Hock-in				+0.98 Straight
Foot angle	Low Angle				+1.05 Steep Angle
Feet & Legs Score	Low				+0.66 High
Fore udder attachment	Loose				+1.38 Strong
Rear udder height	Low				+1.56 High
Rear udder width	Narrow				+1.48 Wide
Udder cleft	Weak				-0.20 Strong
Udder depth	Deep				+1.19 Shallow
Front teat placement	Wide				-0.23 Close
Rear teat placement	Wide				-0.21 Close
Teat length	Short				+0.81 Long

# Sirius Red P



960805  
624WW09114  
HOLNLDM000577620926



GGI-SPERMEX  
Genetics made in Germany

Born: 2021-9-8 KOEPON STAR P 2092 RED-ET

Beta Caseine A1A2 | Kappa Caseine BB | aAa 432561 | Pp\* |

**TPI 2792**  
**NM\$ +850**

**Milk lbs** +550  
**Fat** +0.13 %  
**Protein** +0.07 %  
**Fat** +58 lbs  
**Protein** +37 lbs

**Daughters:** 0  
**Herds:** 0  
**Reliability:** 79 %

**PL** Productive life +6.4 74 % Rel.  
**DPR** Daughter pregnancy rate +1.3 73 % Rel.  
**SCS** Somatic cell score 2.56 74 % Rel.  
**SCE** Sire calving ease 1.8 % Diff. 61 % Rel.  
**DCE** Daughter calving ease 2.5 % Diff. 53 % Rel.  
**SSB** Sire stillbirth 5.0 % 55 % Rel.  
**DSB** Daughter stillbirth 4.6 % 52 % Rel.

♂ Star P RDC (♂ Solitair P)

♀ Koepon OH Rubels Range 17 (1) VG 86 (♂ Rubels Red)  
1/1 9827 4,40 432 4,05 398

♀ Lakeside UPS Red Range (1) VG 86 (♂ Salvatore RDC)  
3/2 9789 4,61 451 3,43 336

♀ De Oosterhof DG Rose D RDC (3) VG 89 (♂ Rubicon)



Sirius Red P

Proofs: 08-2023

960805 Sirius P		-1	0	+1	+2
PTAT	Type				+0.73
UDC	Udder Composite				+1.36
FLC	Feet & Legs Composite				+1.41
BSC	Body Composite				-0.29
Stature	Short				-0.20 Tall
Strength	Frail				-0.65 Strong
Body depth	Shallow				-1.15 Deep
Dairy form	Tight Ribbed				-0.62 Open Ribbed
Rump angle	High Pins				+0.09 Sloped
Thurl width	Narrow				+0.17 Wide
Rear leg (side view)	Posty				+0.06 Sickled
Rear leg (rear view)	Hock-in				+1.59 Straight
Foot angle	Low Angle				+0.63 Steep Angle
Feet & Legs Score	Low				+1.21 High
Fore udder attachment	Loose				+1.71 Strong
Rear udder height	Low				+1.51 High
Rear udder width	Narrow				+0.98 Wide
Udder cleft	Weak				-0.48 Strong
Udder depth	Deep				+1.96 Shallow
Front teat placement	Wide				-0.17 Close
Rear teat placement	Wide				-0.44 Close
Teat length	Short				+0.04 Long

# Samsung Red P



586929  
624WW09100  
HOLDEUM000541829750



Born: 2022-3-19

Beta Caseine A2A2 | Kappa Caseine BB | aAa --- | Pp\*

**TPI 2730**  
**NM\$ +726**

**Milk lbs** +1266  
**Fat** -0.03 %  
**Protein** +0.06 %  
**Daughters:** 0  
**Herds:** 0  
**Reliability:** 78 %

**PL** Productive life +5.5  
**DPR** Daughter pregnancy rate +1.2  
**SCS** Somatic cell score 2.74  
**SCE** Sire calving ease 1.5 % Diff. 60 % Rel.  
**DCE** Daughter calving ease 1.6 % Diff. 53 % Rel.  
**SSB** Sire stillbirth 6.0 %  
**DSB** Daughter stillbirth 4.7 % 51 % Rel.

**PL** Productive life +5.5 73 % Rel.  
**DPR** Daughter pregnancy rate +1.2 73 % Rel.  
**SCS** Somatic cell score 2.74 74 % Rel.  
**SCE** Sire calving ease 1.5 % Diff. 60 % Rel.  
**DCE** Daughter calving ease 1.6 % Diff. 53 % Rel.  
**SSB** Sire stillbirth 6.0 % 54 % Rel.  
**DSB** Daughter stillbirth 4.7 % 51 % Rel.

♂ Sanchez P (♂ Solitair P)

♀ Pisa P (♂ Simon P)

♀ (1) GP 83 (♂ My Dream P)

3/2 9946 3,81 379 3,46 344

♀ Pia Red (3) GP 84 (♂ Brekan)



Samsung Red P

Proofs: 08-2023

586929 Samsung P		-1	0	+1	+2
PTAT	Type				+0.58
UDC	Udder Composite				+0.89
FLC	Feet & Legs Composite				+0.67
BSC	Body Composite				+0.23
Stature	Short				+0.57 Tall
Strength	Frail				+0.23 Strong
Body depth	Shallow				-0.11 Deep
Dairy form	Tight Ribbed				+0.20 Open Ribbed
Rump angle	High Pins				+0.00 Sloped
Thurl width	Narrow				+0.20 Wide
Rear leg (side view)	Posty				+0.29 Sickled
Rear leg (rear view)	Hock-in				+0.83 Straight
Foot angle	Low Angle				+0.81 Steep Angle
Feet & Legs Score	Low				+0.71 High
Fore udder attachment	Loose				+1.46 Strong
Rear udder height	Low				+1.10 High
Rear udder width	Narrow				+0.95 Wide
Udder cleft	Weak				-0.23 Strong
Udder depth	Deep				+1.28 Shallow
Front teat placement	Wide				-0.04 Close
Rear teat placement	Wide				+0.07 Close
Teat length	Short				+0.55 Long

# Moro PP RDC



619241  
624H009092  
HOLDEUM000667736532



Born: 2021-7-24

MORO PP

Beta Caseine A1A2 | Kappa Caseine AB | aAa 234165 | PP\* | RDC

**TPI 2733**  
**NM\$ +650**

**Milk lbs** +634  
**Fat** +0.11 %  
**Protein** +0.07 %  
**Daughters:** 0  
**Herds:** 0  
**Reliability:** 78 %

**PL** Productive life +3.4  
**DPR** Daughter pregnancy rate +0.8  
**SCS** Somatic cell score 2.82  
**SCE** Sire calving ease 1.7 % Diff. 60 % Rel.  
**DCE** Daughter calving ease 2.1 % Diff. 53 % Rel.  
**SSB** Sire stillbirth 5.4 %  
**DSB** Daughter stillbirth 4.5 % 52 % Rel.

**PL** Productive life +3.4 74 % Rel.  
**DPR** Daughter pregnancy rate +0.8 73 % Rel.  
**SCS** Somatic cell score 2.82 74 % Rel.  
**SCE** Sire calving ease 1.7 % Diff. 60 % Rel.  
**DCE** Daughter calving ease 2.1 % Diff. 53 % Rel.  
**SSB** Sire stillbirth 5.4 % 55 % Rel.  
**DSB** Daughter stillbirth 4.5 % 52 % Rel.

♂ Money P (♂ Match P)

♀ Tasia P (♂ Hotspot P)

♀ HWH Thalia (1) GP 82 (♂ Kerrigan)

4/4 8187 4,21 345 3,74 306

♀ Talia (♂ Mardi Gras)



Moro PP RDC

Proofs: 08-2023

619241 Moro PP RDC		-1	0	+1	+2
PTAT	Type				+1.50
UDC	Udder Composite				+2.16
FLC	Feet & Legs Composite				+1.04
BSC	Body Composite				+0.12
Stature	Short				+0.64 Tall
Strength	Frail				+0.00 Strong
Body depth	Shallow				-0.21 Deep
Dairy form	Tight Ribbed				+0.30 Open Ribbed
Rump angle	High Pins				-0.66 Sloped
Thurl width	Narrow				+0.77 Wide
Rear leg (side view)	Posty				-0.54 Sickled
Rear leg (rear view)	Hock-in				+1.23 Straight
Foot angle	Low Angle				+0.89 Steep Angle
Feet & Legs Score	Low				+1.09 High
Fore udder attachment	Loose				+2.66 Strong
Rear udder height	Low				+2.63 High
Rear udder width	Narrow				+2.17 Wide
Udder cleft	Weak				+0.54 Strong
Udder depth	Deep				+2.35 Shallow
Front teat placement	Wide				+0.34 Close
Rear teat placement	Wide				+0.57 Close
Teat length	Short				+0.20 Long

# Baltic PP



823294  
624H009107  
HOLDEUM001504753274



GGI-SPERMEX  
Genetics made in Germany

Born: 2021-12-25 BALTIC PP

Beta Caseine A2A2 | Kappa Caseine AB | aAa 432561 | PP\* |

**TPI 2698**  
**NM\$ +567**

Milk lbs +325  
Fat +0.14 %  
Protein +0.09 %  
+51 lbs +37 lbs

Daughters: 0  
Herds: 0  
Reliability: 78 %

PL Productive life +4.7 74 % Rel.  
DPR Daughter pregnancy rate +2.4 73 % Rel.  
SCS Somatic cell score 2.72 74 % Rel.  
SCE Sire calving ease 2.0 % Diff. 60 % Rel.  
DCE Daughter calving ease 1.9 % Diff. 53 % Rel.  
SSB Sire stillbirth 6.3 % 55 % Rel.  
DSB Daughter stillbirth 5.4 % 51 % Rel.

♂ Brandung P (♂ Bali)

♀ Cocktail-P (♂ Builder P)

♀ Chantre (1) GP 84 (♂ Yoyo)

1/1 11046 3,83 423 3,71 410

♀ Charlize (2) VG 86 (♂ Silver)



Baltic PP

Proofs: 08-2023

823294 Baltic PP		-1	0	+1	+2
PTAT	Type				+1.46
UDC	Udder Composite				+1.12
FLC	Feet & Legs Composite				+0.58
BSC	Body Composite				+1.98
Stature	Short				+2.05 Tall
Strength	Frail				+1.73 Strong
Body depth	Shallow				+1.05 Deep
Dairy form	Tight Ribbed				-0.01 Open Ribbed
Rump angle	High Pins				+2.12 Sloped
Thurl width	Narrow				+1.02 Wide
Rear leg (side view)	Posty				-1.05 Sickled
Rear leg (rear view)	Hock-in				+0.93 Straight
Foot angle	Low Angle				+1.83 Steep Angle
Feet & Legs Score	Low				+0.96 High
Fore udder attachment	Loose				+2.12 Strong
Rear udder height	Low				+1.34 High
Rear udder width	Narrow				+1.56 Wide
Udder cleft	Weak				+0.38 Strong
Udder depth	Deep				+1.90 Shallow
Front teat placement	Wide				+0.33 Close
Rear teat placement	Wide				+0.24 Close
Teat length	Short				+0.00 Long

# Hadil PP



811673  
624H009093  
HOLDEUM000541494488



GGI-SPERMEX  
Genetics made in Germany

Born: 2021-4-11 HFP HADIL PP

Beta Caseine A2A2 | Kappa Caseine AB | aAa 432561 | PP\* |

**TPI 2642**  
**NM\$ +523**

Milk lbs +879  
Fat -0.01 %  
Protein +0.04 %  
+31 lbs +38 lbs

Daughters: 0  
Herds: 0  
Reliability: 79 %

PL Productive life +4.0 74 % Rel.  
DPR Daughter pregnancy rate +1.8 73 % Rel.  
SCS Somatic cell score 2.71 74 % Rel.  
SCE Sire calving ease 2.0 % Diff. 60 % Rel.  
DCE Daughter calving ease 2.0 % Diff. 53 % Rel.  
SSB Sire stillbirth 6.4 % 55 % Rel.  
DSB Daughter stillbirth 6.0 % 52 % Rel.

♂ Hesekeil PP (♂ Hotspot P)

♀ HFP Keeva (2) VG 88 (♂ Adlon P)

3/2 11278 4,03 455 3,58 404

♀ WIL Kira (3) VG 88 (♂ Superhero)

4/3 13170 4,15 546 3,64 480

♀ WIL Kati (1) VG 85 (♂ Penley)



Hadil PP

Proofs: 08-2023

811673 Hadil PP		-1	0	+1	+2
PTAT	Type				+1.45
UDC	Udder Composite				+1.78
FLC	Feet & Legs Composite				+0.83
BSC	Body Composite				+0.45
Stature	Short				+1.31 Tall
Strength	Frail				+0.26 Strong
Body depth	Shallow				+0.02 Deep
Dairy form	Tight Ribbed				+0.33 Open Ribbed
Rump angle	High Pins				+0.35 Sloped
Thurl width	Narrow				+0.66 Wide
Rear leg (side view)	Posty				-0.74 Sickled
Rear leg (rear view)	Hock-in				+1.06 Straight
Foot angle	Low Angle				+0.56 Steep Angle
Feet & Legs Score	Low				+1.09 High
Fore udder attachment	Loose				+2.64 Strong
Rear udder height	Low				+1.79 High
Rear udder width	Narrow				+1.52 Wide
Udder cleft	Weak				+0.18 Strong
Udder depth	Deep				+3.25 Shallow
Front teat placement	Wide				+0.15 Close
Rear teat placement	Wide				+0.16 Close
Teat length	Short				-0.05 Long

# Mo Red PP



823295  
624WW09105  
HOLDEUM000541743745



Born: 2022-1-12 MO RED PP  
Beta Caseine A2A3 | Kappa Caseine AB | aAa 423615 | PP\*

**TPI 2858**  
**NM\$ +777**

Milk lbs +1117  
Fat +0.09 %  
Protein +0.04 %  
+68 lbs +45 lbs

Daughters: 0  
Herds: 0  
Reliability: 79 %

PL Productive life +5.0 74 % Rel.  
DPR Daughter pregnancy rate -0.4 73 % Rel.  
SCS Somatic cell score 2.62 74 % Rel.  
SCE Sire calving ease 1.8 % Diff. 62 % Rel.  
DCE Daughter calving ease 2.4 % Diff. 56 % Rel.  
SSB Sire stillbirth 5.6 % 59 % Rel.  
DSB Daughter stillbirth 4.9 % 54 % Rel.

♂ McDonald (♂ Ronald)

♀ Koepon RUW Serena Red P (1) VG 86 (♂ Match P)  
200 T. 7453 3,96 295 3,52 262

♀ Koepon Slvtr Sanne 8-ET (1) VG 88 (♂ Salvatore)  
3/2 11449 4,26 488 3,28 376

♀ DG HS Schreur Sanne (2) VG 87 (♂ Delta 1427)



Mo Red PP

Proofs: 08-2023

823295 Mo Red PP		-1	0	+1	+2
PTAT	Type				+2.44
UDC	Udder Composite				+2.13
FLC	Feet & Legs Composite				+1.39
BSC	Body Composite				+0.73
Stature	Short				+2.73 Tall
Strength	Frail				+0.75 Strong
Body depth	Shallow				+0.73 Deep
Dairy form	Tight Ribbed				+1.50 Open Ribbed
Rump angle	High Pins				-0.26 Sloped
Thurl width	Narrow				+1.23 Wide
Rear leg (side view)	Posty				-0.48 Sickled
Rear leg (rear view)	Hock-in				+1.89 Straight
Foot angle	Low Angle				+2.39 Steep Angle
Feet & Legs Score	Low				+1.82 High
Fore udder attachment	Loose				+3.02 Strong
Rear udder height	Low				+3.19 High
Rear udder width	Narrow				+2.64 Wide
Udder cleft	Weak				+0.21 Strong
Udder depth	Deep				+3.12 Shallow
Front teat placement	Wide				+0.54 Close
Rear teat placement	Wide				+0.17 Close
Teat length	Short				-0.21 Long

# Holmer Red PP



924775  
624WW09091  
HOLDEUM000541082332



Born: 2021-3-19 THI HOLMER PP  
Beta Caseine A1A2 | Kappa Caseine BB | aAa 432561 | PP\*

**TPI 2676**  
**NM\$ +743**

Milk lbs +107  
Fat +0.16 %  
Protein +0.07 %  
+49 lbs +23 lbs

Daughters: 0  
Herds: 0  
Reliability: 79 %

PL Productive life +6.1 74 % Rel.  
DPR Daughter pregnancy rate +2.6 73 % Rel.  
SCS Somatic cell score 2.64 74 % Rel.  
SCE Sire calving ease 1.7 % Diff. 54 % Rel.  
DCE Daughter calving ease 2.1 % Diff. 52 % Rel.  
SSB Sire stillbirth 5.7 % 50 % Rel.  
DSB Daughter stillbirth 6.1 % 51 % Rel.

♂ Host PP RDC (♂ Hotspot P)

♀ Hul-Stein Amerika P RDC (2) VG 88 (♂ Match P RDC)  
2/2 9810 4,87 478 3,79 372

♀ Hul-Stein Angela (2) VG 85 (♂ Salvatore RDC)  
3/2 9592 4,49 431 3,64 349

♀ Angie Red (1) GP 84 (♂ Symion RDC)



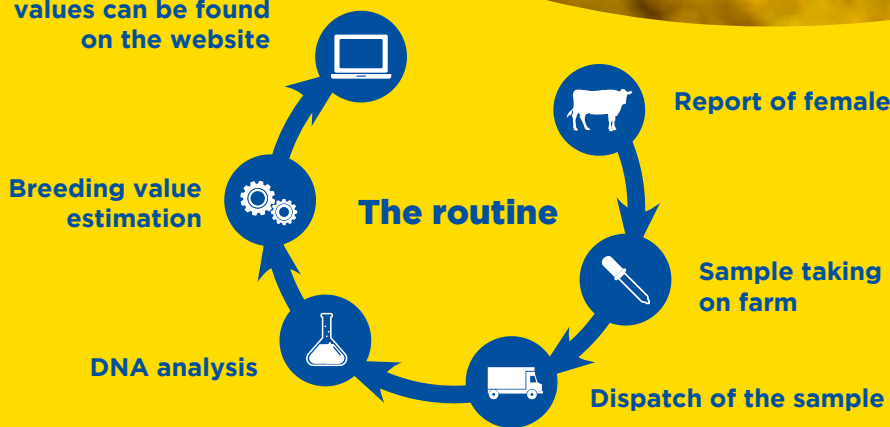
Holmer Red PP

Proofs: 08-2023

924775 Holmer PP		-1	0	+1	+2
PTAT	Type				+0.31
UDC	Udder Composite				+1.40
FLC	Feet & Legs Composite				+0.76
BSC	Body Composite				-0.67
Stature	Short				-0.70 Tall
Strength	Frail				-1.10 Strong
Body depth	Shallow				-1.63 Deep
Dairy form	Tight Ribbed				-1.31 Open Ribbed
Rump angle	High Pins				-0.93 Sloped
Thurl width	Narrow				-1.20 Wide
Rear leg (side view)	Posty				-1.68 Sickled
Rear leg (rear view)	Hock-in				+0.82 Straight
Foot angle	Low Angle				+0.84 Steep Angle
Feet & Legs Score	Low				+0.53 High
Fore udder attachment	Loose				+2.42 Strong
Rear udder height	Low				+1.41 High
Rear udder width	Narrow				+0.29 Wide
Udder cleft	Weak				-0.97 Strong
Udder depth	Deep				+2.96 Shallow
Front teat placement	Wide				-1.71 Close
Rear teat placement	Wide				-1.60 Close
Teat length	Short				+1.24 Long



Genomic breeding values can be found on the website



**Make the right decision now with herd genotyping!**



**Your advantages: KUHVISION®**

- ✓ Exclusive genomic breeding values for female mating
- ✓ Optimized mating service
- ✓ Access to the internet browser-based portal „Netrindgenom“
- ✓ Increased breeding progress
- ✓ Improvement of herd health with innovative health breeding values
- ✓ Herd replacement as planned
- ✓ Significantly reduced rearing costs by only raising the very best heifers
- ✓ Clearly better profitability
- ✓ 63 indexes and characteristics available incl. Polled status, Beta/Kappa Casein for each animal

**For more information, please contact your GGI-SPERMEX partner!**



**GGI-SPERMEX GmbH**

Am Osterfeld 14  
49661 Cloppenburg-Bethen  
Germany

Phone: +49 4471 91 74-0  
Fax: +49 4471 91 74-74

Email: info@ggi-spermex.de  
Internet: www.ggi-spermex.de

Ottostraße 26  
85521 Ottobrunn  
Germany

Phone: +49 89 665 98 46-0  
Fax: +49 89 665 98 46-29

Email: info@ggi-spermex.de  
Internet: www.ggi-spermex.de

Distribuidor en España:  
IMPORT EXPORT BAS, SL  
Carretera Martins, 24 - Parcel·la 5  
17176 Sant Esteve d'en Bas (GIRONA)  
Telefonos 972 690 426 · 649 425 331  
www.bas-sl.com · info@bas-sl.com  
Redes Sociales: @importexportbas

✉ info@ggi-spermex.de  
@ www.ggi-spermex.de



The specifications regarding the breeding values are based on computer models of the vit in Verden, Germany and NAAB in Columbia, USA. Specifications regarding the health status of the bulls result from tests done by national and international laboratories. For the correctness of the results mentioned in this catalogue GGI-SPERMEX does not assume any liability. Furthermore, our general terms and conditions are valid which can be obtained by phone +49-4471-9174 0 or email to info@ggi-spermex.de.